



# Jordan Valley Water Conservancy District

8215 SOUTH 1300 WEST  
WEST JORDAN, UTAH 84088  
PHONE (801) 565-4300

## 1516 W 14600 S WELL ELECTRICAL IMPROVEMENTS

1516 WEST 14600 SOUTH, BLUFFDALE, UTAH  
PROJECT NUMBER: 4346  
NOVEMBER 2025

OWNER AND ENGINEER  
JORDAN VALLEY WATER  
CONSERVANCY DISTRICT

DRAWING NO.	SHEET TITLE
G-1	COVER SHEET & DRAWING INDEX
G-2	OVERALL SITE & SCOPE OF WORK
E-1	DEMOLITION
E-2	CONCRETE & CONDUIT
E-3	ELECTRICAL CONSTRUCTION
E-4	ONE LINE DIAGRAM AND SWITCHGEAR DRAWINGS
E-5	ORIGINAL GROUNDING DRAWING FOR REFERENCE



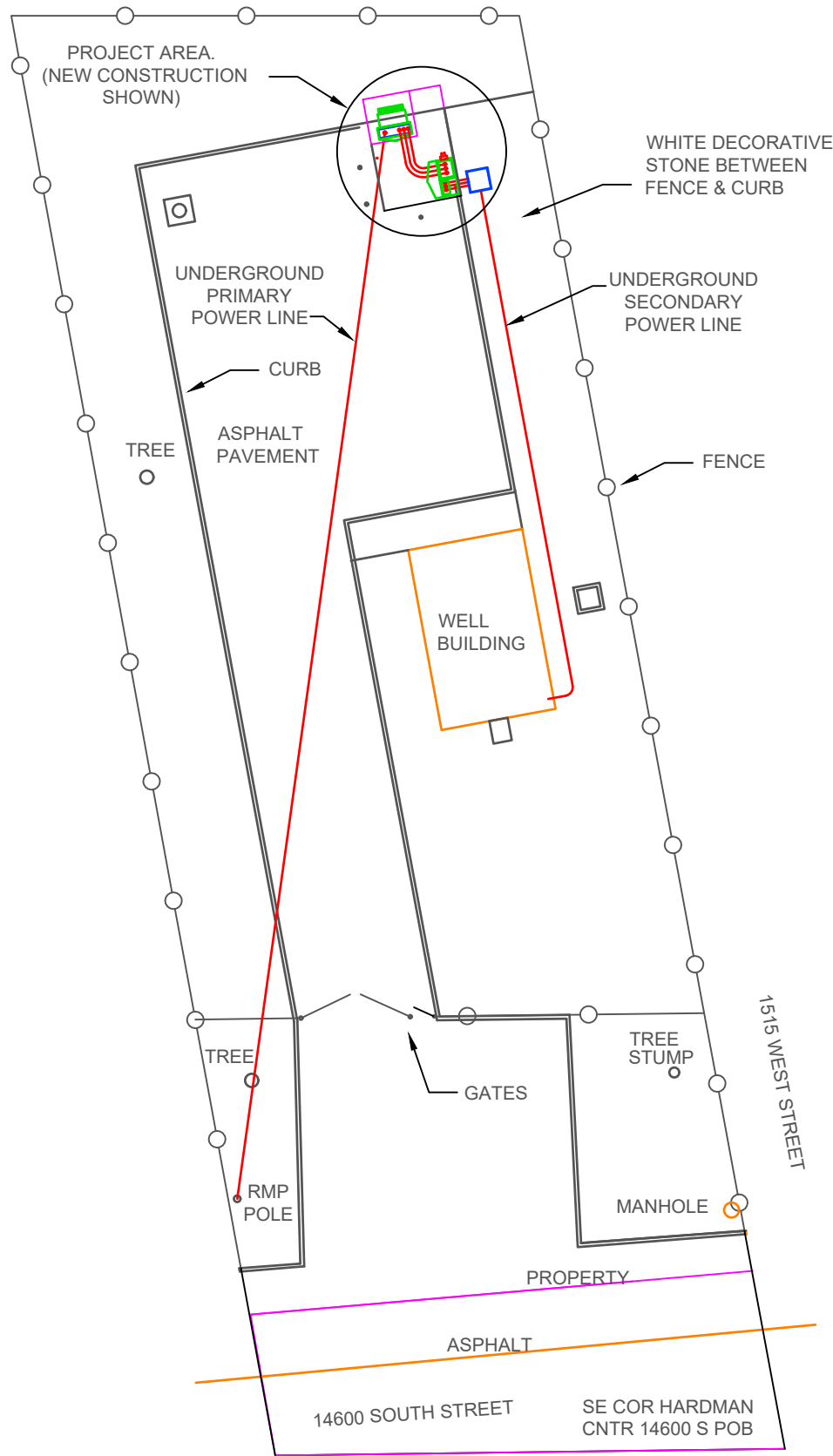
REVISIONS			
REV.	DESCRIPTION	BY	DATE



JORDAN VALLEY WATER  
CONSERVANCY DISTRICT  
8215 SOUTH 1300 WEST  
WEST JORDAN, UTAH 84088-0070  
PHONE (801) 565-4300

LINE IS 1 INCH AT FULL SIZE (IF NOT 1" - SCALE ACCORDINGLY)	ORIGINAL SIZE <b>B</b>
SCALE: NONE	
DESIGN: DONALD L OLSEN	
DRAWING: DONALD L OLSEN	
PROJ. MGR: KEVIN RUBOW	
APPROVAL:	

1516 W 14600 S WELL ELECTRICAL IMPROVEMENTS	DATE 11/3/25
COVER SHEET & DRAWING INDEX	PROJECT NUMBER <b>4346</b>
	DRAWING NUMBER <b>G-1</b>
	SHEET NUMBER <b>1</b> OF <b>7</b>



NORTH

PROJECT SCOPE OF WORK

1. THE PURPOSE OF THIS PROJECT IS TO INSTALL A UTILITY OWNED POWER TRANSFORMER TO REPLACE A JORDAN VALLEY WATER CONSERVANCY DISTRICT (JVWCD) OWNED POWER TRANSFORMER. THE EXISTING TRANSFORMER HAS A FUSED PRIMARY DISCONNECT SWITCH WHICH SOMETIMES REMAINS CLOSED WHEN THE SWITCH HANDLE IS TURNED TO THE OPEN POSITION, RESULTING IN A DANGEROUS CONDITION.
2. THE NEW TRANSFORMER WILL NOT HAVE AN EXTERNAL FUSED DISCONNECT SWITCH, ONLY INTERNAL FUSES AND LOADBREAK ELBOWS FOR DISCONNECTION. THESE WILL ONLY BE ACCESSIBLE TO UTILITY PERSONNEL.
3. EXISTING METERING USES TOROID CURRENT TRANSFORMERS IN THE TRANSFORMER LOAD SIDE TERMINATION ENCLOSURE WITH A SEPARATE SMALL METER SOCKET ENCLOSURE. THESE WILL BE REMOVED.
4. NEW METERING WILL USE BUS BAR CURRENT TRANSFORMERS IN THE NEW SWITCHGEAR.
5. EXISTING CONCRETE TRANSFORMER PAD WILL BE REMOVED AND REPLACED WITH A NEW PRECAST TRANSFORMER PAD AND NEW CAST-IN-PLACE SWITCHGEAR PAD.
6. ROCKY MOUNTAIN POWER (RMP) WILL DE-ENERGIZE THE PRIMARY POWER LINE, REMOVE THE CURRENT TRANSFORMERS AND REMOVE THE ENERGY METER.
7. RMP WILL FURNISH AND INSTALL A NEW POWER TRANSFORMER, SECONDARY CONDUCTORS BETWEEN THE TRANSFORMER AND SWITCHGEAR, CURRENT TRANSFORMERS, AND ENERGY METER.
8. JVWCD WILL FURNISH NEW SWITCHGEAR AND METER SOCKET ENCLOSURE.
9. THE CONTRACTOR WILL TRANSPORT THE NEW SWITCHGEAR FROM THE JVWCD WAREHOUSE IN WEST JORDAN TO THE JOB SITE.
10. THE CONTRACTOR WILL REMOVE, TRANSPORT, AND DISPOSE OF THE EXISTING TRANSFORMER, FUSED DISCONNECT SWITCH, AND CONCRETE PAD OFFSITE.
11. ONSITE BURIAL OF RUBBLE IS NOT PERMITTED.
12. DISPOSAL AND RECYCLING OF REMOVED MATERIAL SHALL BE DONE ACCORDING TO APPLICABLE ENVIRONMENTAL REGULATIONS.
13. THE CONTRACTOR WILL PERFORM ALL OTHER DEMOLITION AND CONSTRUCTION AS SHOWN ON THIS DRAWING SET.
14. THE CONTRACTOR SHALL CHECK ELECTRICAL PHASE ROTATION AT THE MCC BEFORE DEMOLITION AND AFTER COMPLETION OF WORK TO VERIFY CORRECT ROTATION.

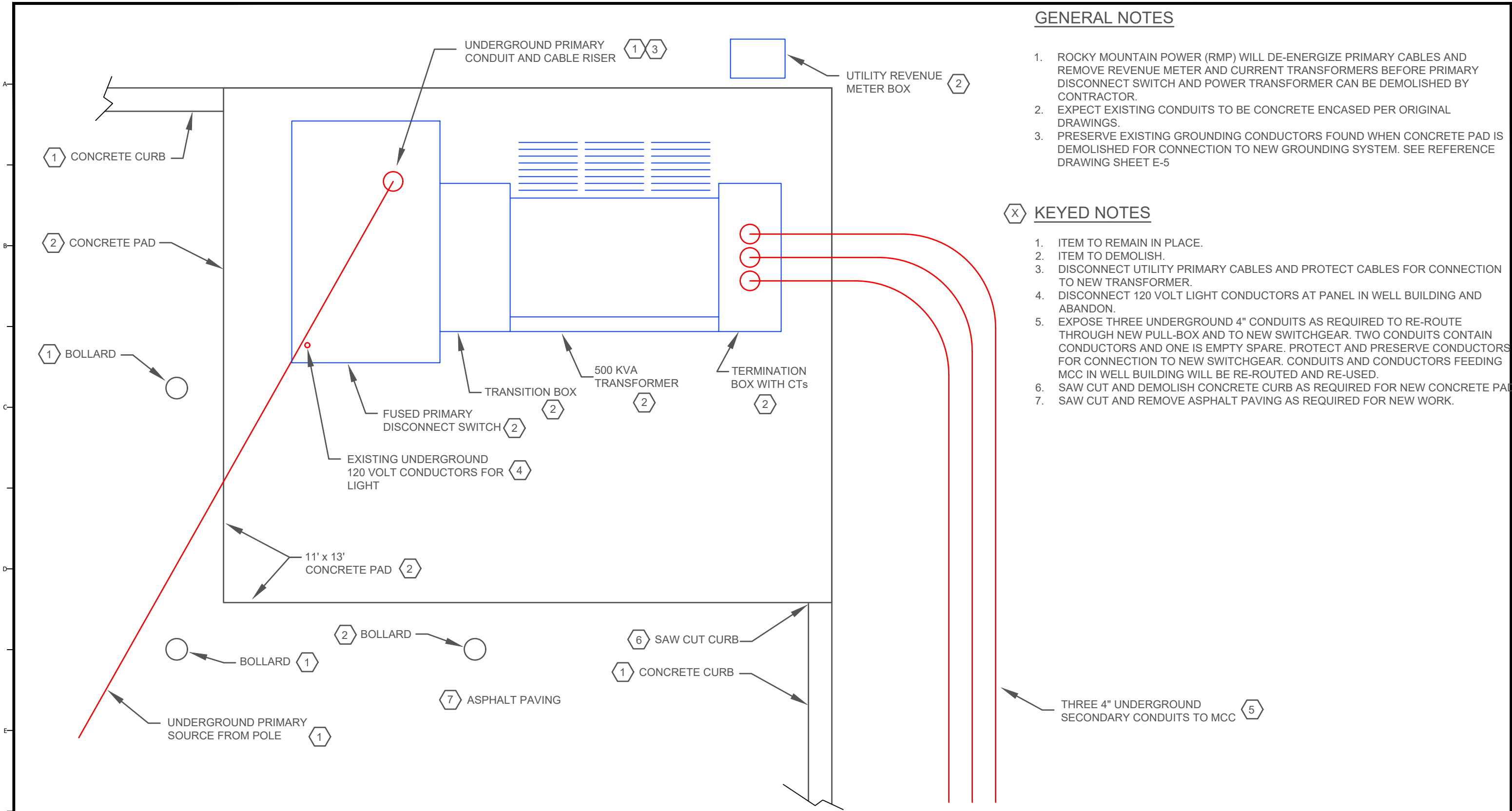
REVISIONS			
REV.	DESCRIPTION	BY	DATE



JORDAN VALLEY WATER  
CONSERVANCY DISTRICT  
8215 SOUTH 1300 WEST  
WEST JORDAN, UTAH 84088-0070  
PHONE (801) 565-4300

LINE IS 1" = 1" AT FULL SIZE (IF NOT 1" - SCALE ACCORDINGLY)	ORIGINAL SIZE B
SCALE: 1" = 25' APPROX.	
DESIGN:	DONALD L OLSEN
DRAWING:	DONALD L OLSEN
PROJ. MGR:	KEVIN RUBOW
APPROVAL:	

1516 W 14600 S WELL ELECTRICAL IMPROVEMENTS	DATE 11/3/25
OVERALL SITE & SCOPE OF WORK	PROJECT NUMBER 4346
	DRAWING NUMBER G-2
	SHEET NUMBER 2 OF 7



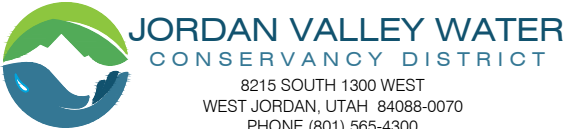
GENERAL NOTES

- 1. ROCKY MOUNTAIN POWER (RMP) WILL DE-ENERGIZE PRIMARY CABLES AND REMOVE REVENUE METER AND CURRENT TRANSFORMERS BEFORE PRIMARY DISCONNECT SWITCH AND POWER TRANSFORMER CAN BE DEMOLISHED BY CONTRACTOR.
- 2. EXPECT EXISTING CONDUITS TO BE CONCRETE ENCASED PER ORIGINAL DRAWINGS.
- 3. PRESERVE EXISTING GROUNDING CONDUCTORS FOUND WHEN CONCRETE PAD IS DEMOLISHED FOR CONNECTION TO NEW GROUNDING SYSTEM. SEE REFERENCE DRAWING SHEET E-5

KEYED NOTES

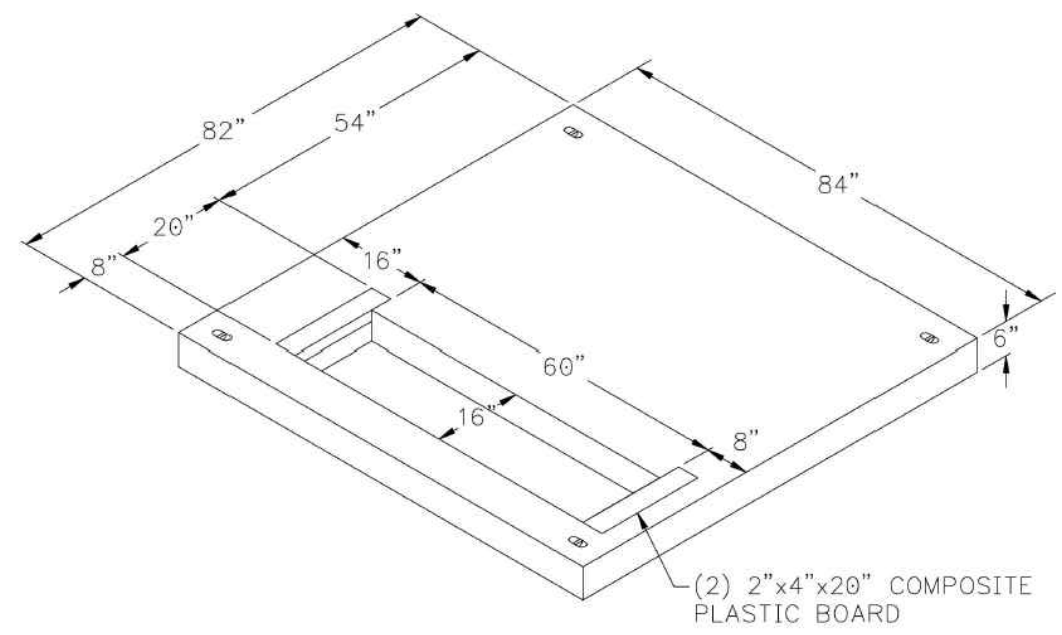
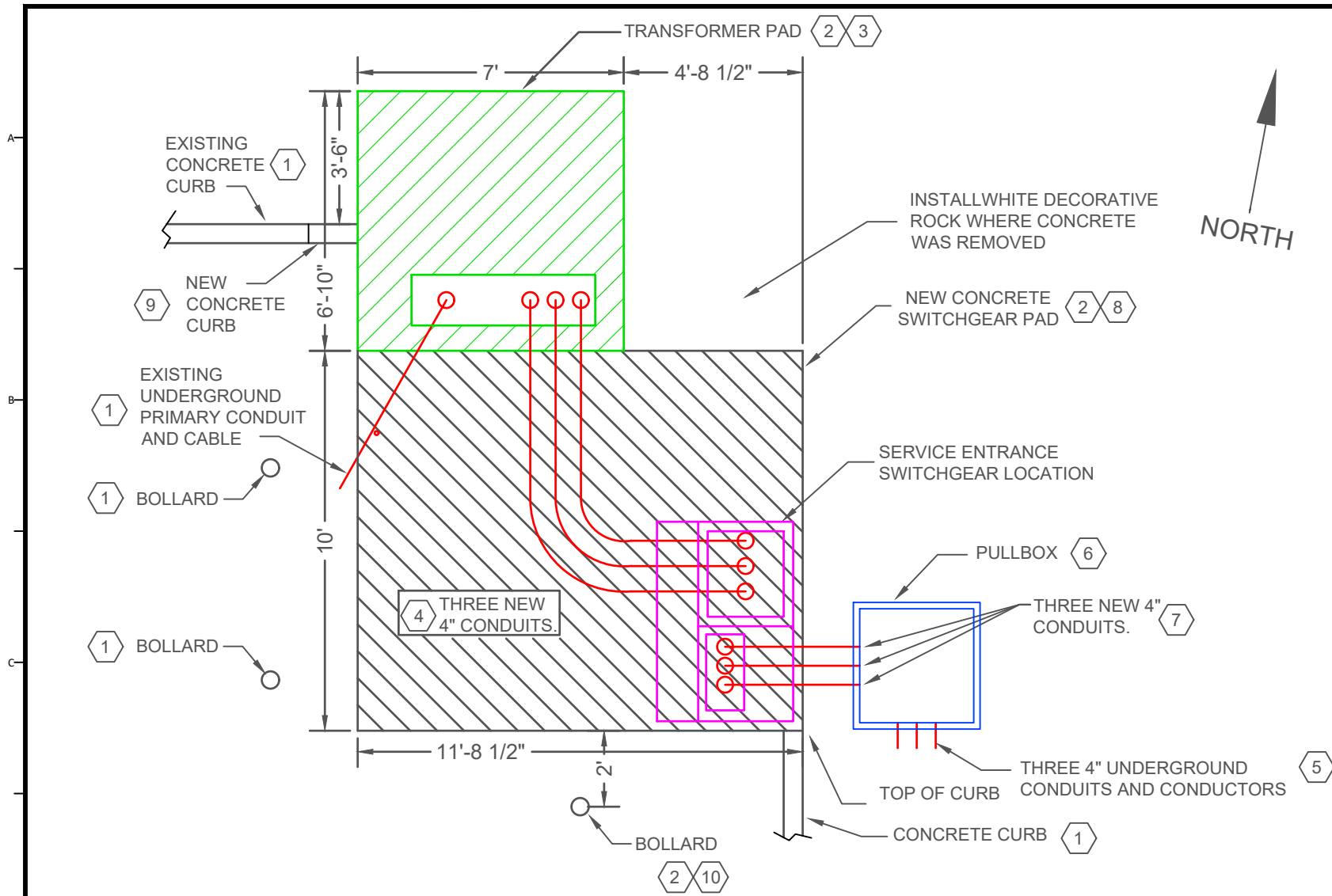
- 1. ITEM TO REMAIN IN PLACE.
- 2. ITEM TO DEMOLISH.
- 3. DISCONNECT UTILITY PRIMARY CABLES AND PROTECT CABLES FOR CONNECTION TO NEW TRANSFORMER.
- 4. DISCONNECT 120 VOLT LIGHT CONDUCTORS AT PANEL IN WELL BUILDING AND ABANDON.
- 5. EXPOSE THREE UNDERGROUND 4" CONDUITS AS REQUIRED TO RE-ROUTE THROUGH NEW PULL-BOX AND TO NEW SWITCHGEAR. TWO CONDUITS CONTAIN CONDUCTORS AND ONE IS EMPTY SPARE. PROTECT AND PRESERVE CONDUCTORS FOR CONNECTION TO NEW SWITCHGEAR. CONDUITS AND CONDUCTORS FEEDING MCC IN WELL BUILDING WILL BE RE-ROUTED AND RE-USED.
- 6. SAW CUT AND DEMOLISH CONCRETE CURB AS REQUIRED FOR NEW CONCRETE PAD.
- 7. SAW CUT AND REMOVE ASPHALT PAVING AS REQUIRED FOR NEW WORK.

REVISIONS			
REV.	DESCRIPTION	BY	DATE



LINE IS 1/8" AT FULL SIZE (IF NOT 1" - SCALE ACCORDINGLY)	ORIGINAL SIZE B
SCALE: 1/2" = 1'	
DESIGN:	DONALD L. OLSEN
DRAWING:	DONALD L. OLSEN
PROJ. MGR:	KEVIN RUBOW
APPROVAL:	

1516 W 14600 S WELL ELECTRICAL IMPROVEMENTS	DATE 11/3/25
DEMOLITION	PROJECT NUMBER 4346
	DRAWING NUMBER E-1
	SHEET NUMBER 3 OF 7



**Figure 1—15-25 kV, 75-500 kVA Three-Phase Transformer Flat Pad (SI# 1790021)**

3 ROCKY MOUNTAIN POWER PRECAST TRANSFORMER PAD DRAWING


**GENERAL NOTES**

- EXISTING UNDERGROUND PRIMARY CONDUIT AND CABLE RISER LOCATION WILL DETERMINE THE LOCATION OF THE NEW TRANSFORMER PAD. MAKE MINOR ADJUSTMENTS TO LOCATION OF TRANSFORMER PAD AS NECESSARY.
- PLACE TOP OF TRANSFORMER PAD LEVEL AND 2-4 INCHES ABOVE SWITCHGEAR PAD.
- MATCH TOP OF SOUTHEAST CORNER OF SWITCHGEAR PAD TO TOP OF ADJACENT CURB. PAD SHALL BE LEVEL UNDER SWITCHGEAR. GENTLY SLOPE PAD AWAY FROM SWITCHGEAR TO DRAIN.
- SWITCHGEAR PAD SHALL BE 6" THICK 4500 PSI CONCRETE WITH SMOOTH FINISH.
- PLACE #4 REBAR @ 10" ON CENTER EACH WAY AND NEAR CENTER OF THICKNESS IN SWITCHGEAR PAD.
- REMOVE AND SAVE DECORATIVE ROCK WHERE EXCAVATION IS REQUIRED. DO NOT MIX DIRT WITH DECORATIVE ROCK.
- USE SAVED ROCK TO RESTORE DISTURBED AREAS.
- INSTALL COMPACTED ROAD BASE TO FILL UNDER NEW TRANSFORMER PAD WHERE GRADE SLOPES DOWN NORTH OF EXISTING PAD.
- INSTALL ASPHALT PAVING IN SPACE BETWEEN EXISTING ASPHALT AND NEW CONCRETE. PATCH ASPHALT AS REQUIRED.

**KEYED NOTES**

- EXISTING ITEM TO BE REMAIN IN PLACE.
- NEW ITEM.
- RMP 15KV, 500 KVA THREE PHASE TRANSFORMER FLAT PAD (SI#1790021). PROVIDED BY CONTRACTOR. OBTAIN FROM RMP APPROVED PRECAST CONCRETE VENDOR.
- INSTALL THREE 4" UNDERGROUND PVC CONDUITS FROM THE NEW TRANSFORMER SECONDARY SPACE TO THE SERVICE ENTRANCE SWITCHGEAR UTILITY SPACE. CONDUCTORS AND TERMINATION BY UTILITY.
- EXPOSE AND RE-ROUTE THREE EXISTING UNDERGROUND 4" CONDUITS TO NEW SERVICE ENTRANCE SWITCHGEAR THROUGH NEW PULLBOX. TWO CONDUITS CONTAIN CONDUCTORS AND ONE IS EMPTY SPARE. CONDUITS AND CONDUCTORS FEEDING MCC IN WELL BUILDING WILL BE RE-USED.
- INSTALL A 36" X 36" X 36" POLYMER CONCRETE PULLBOX FOR ROUTING EXISTING CABLES TO SWITCHGEAR.
- INSTALL THREE 4" CONDUITS FROM THE SWITCHGEAR LOAD SPACE TO THE NEW PULLBOX.
- CAST A NEW CONCRETE PAD FOR THE SWITCHGEAR.
- CAST A NEW CONCRETE CURB BETWEEN THE EXISTING CURB AND THE TRANSFORMER PAD.
- BOLLARD SOUTH OF NEW CONCRETE PAD TO BE RELOCATED EXISTING ITEM OR NEW ITEM TO MATCH EXISTING BOLLARDS.

REVISIONS			
REV.	DESCRIPTION	BY	DATE



**JORDAN VALLEY WATER**  
CONSERVANCY DISTRICT  
8215 SOUTH 1300 WEST  
WEST JORDAN, UTAH 84088-0070  
PHONE (801) 565-4300

LINE IS 1" INCH  
AT FULL SIZE  
(IF NOT 1" - SCALE ACCORDINGLY)

SCALE: 1/4" = 1'

DESIGN: DONALD L OLSEN  
DRAWING: DONALD L OLSEN  
PROJ. MGR: KEVIN RUBOW  
APPROVAL: \_\_\_\_\_

1516 W 14600 S WELL ELECTRICAL IMPROVEMENTS

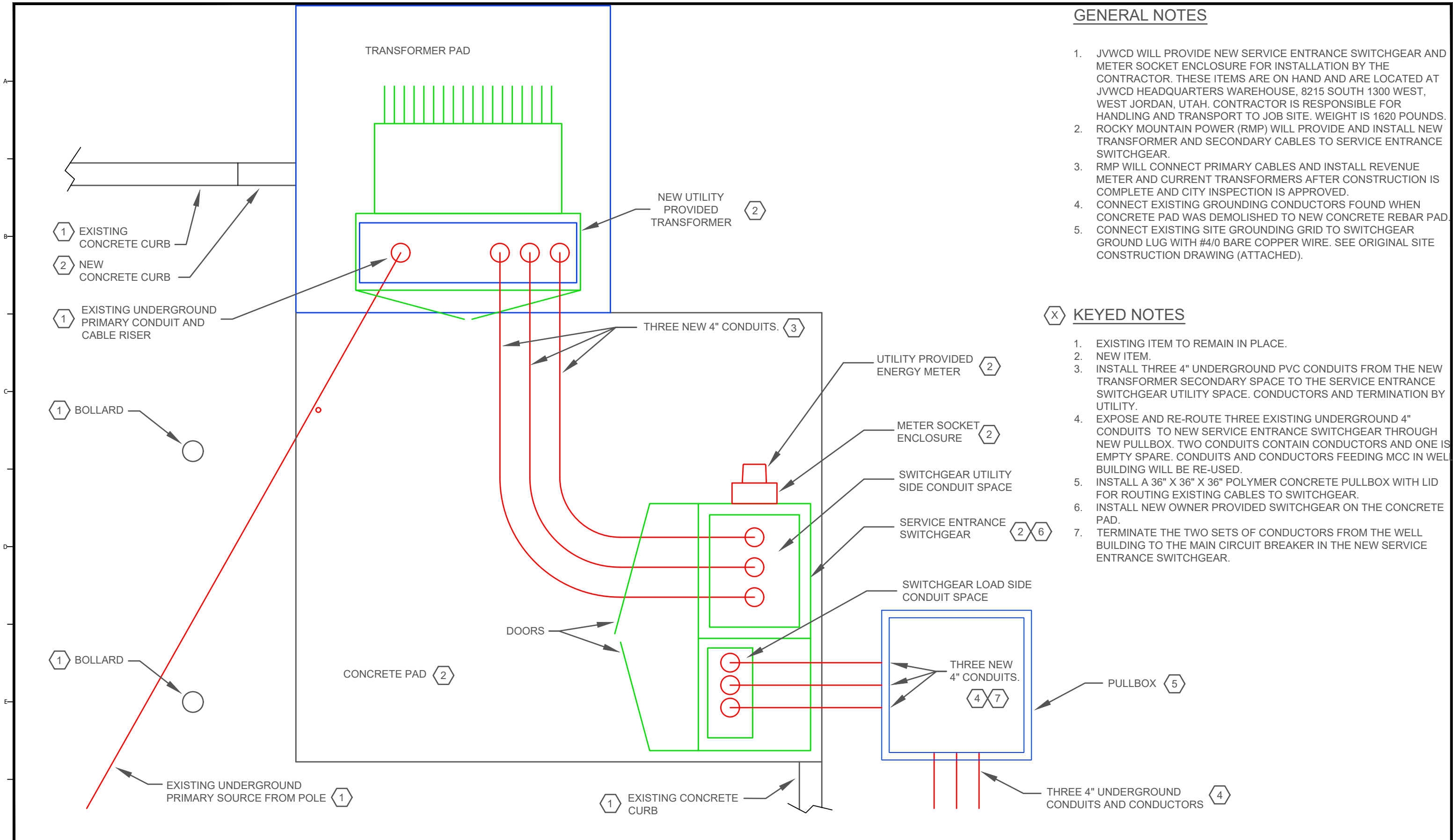
CONCRETE & CONDUIT

DATE  
11/3/25

PROJECT NUMBER  
**4346**

DRAWING NUMBER  
**E-2**

SHEET NUMBER  
**4 OF 7**



REVISIONS			
REV.	DESCRIPTION	BY	DATE

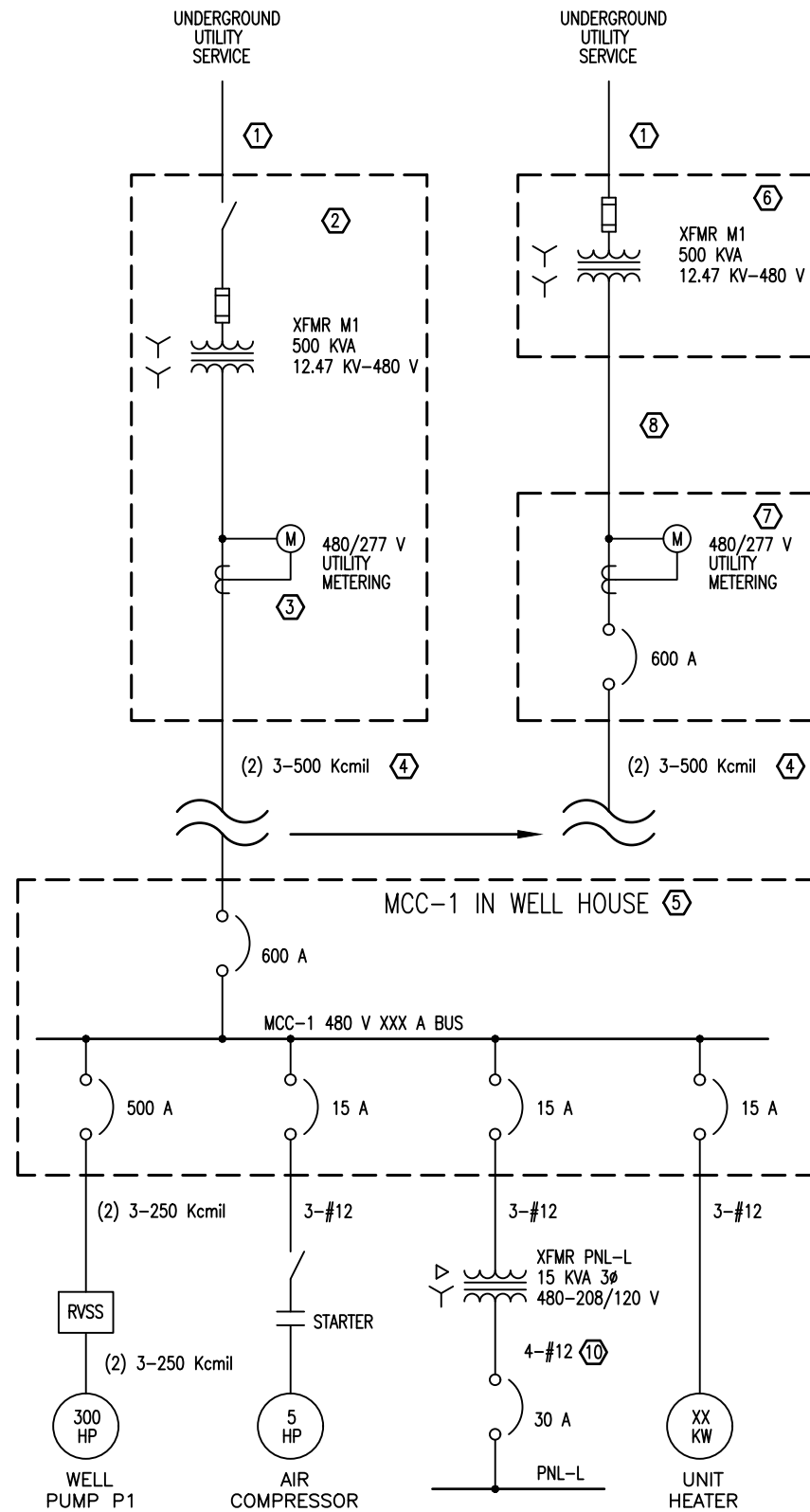


**JORDAN VALLEY WATER**  
CONSERVANCY DISTRICT  
8215 SOUTH 1300 WEST  
WEST JORDAN, UTAH 84088-0070  
PHONE (801) 565-4300

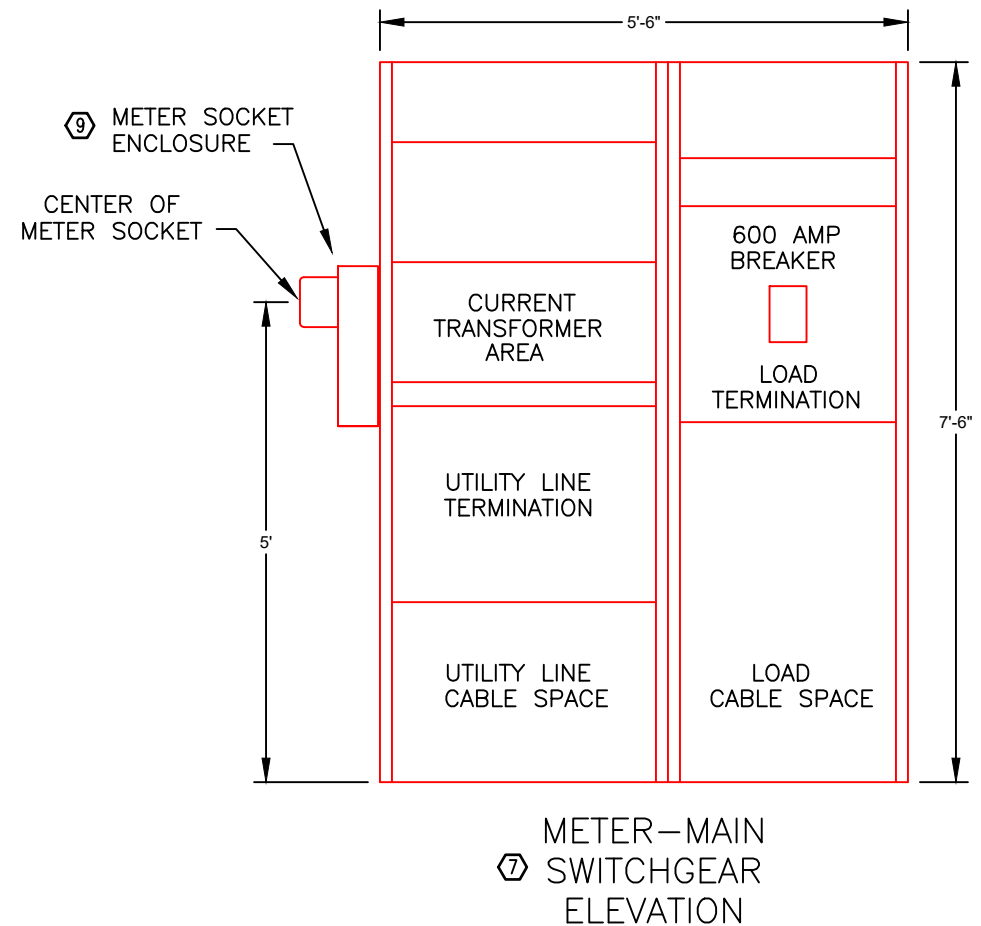
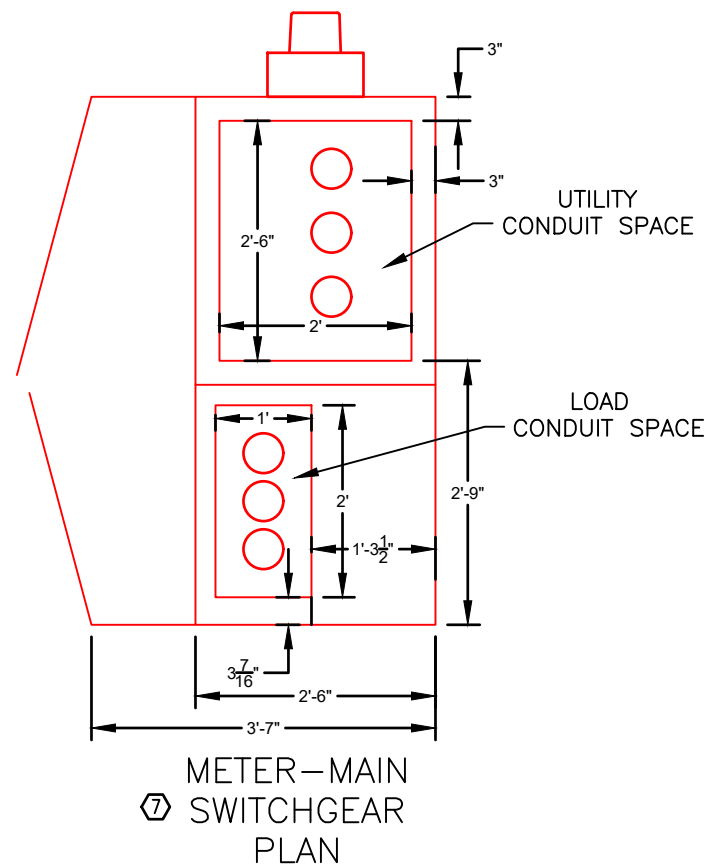
LINE IS 1" INCH AT FULL SIZE (IF NOT 1" - SCALE ACCORDINGLY)	ORIGINAL SIZE <b>B</b>
SCALE: 1/2" = 1'	
DESIGN:	DONALD L OLSEN
DRAWING:	DONALD L OLSEN
PROJ. MGR:	KEVIN RUBOW
APPROVAL:	

1516 W 14600 S WELL ELECTRICAL IMPROVEMENTS	DATE 11/3/2025
ELECTRICAL CONSTRUCTION	PROJECT NUMBER <b>4346</b>
	DRAWING NUMBER <b>E-3</b>
	SHEET NUMBER <b>5 OF 7</b>





- KEYED NOTES**
- EXISTING PRIMARY CABLES TO REMAIN IN PLACE.
  - 15 KV SWITCH, FUSES, & TRANSFORMER TO BE REMOVED BY CONTRACTOR.
  - EXISTING UTILITY METER & CURRENT TRANSFORMERS TO BE REMOVED BY RMP.
  - EXISTING 480 VOLT SECONDARY CABLES TO WELL HOUSE TO BE RE-ROUTED INTO NEW METER-MAIN SWITCHGEAR.
  - ELECTRICAL SYSTEM IN WELL HOUSE TO REMAIN UNCHANGED EXCEPT FOR NOTE #10.
  - NEW TRANSFORMER WITH INTERNAL FUSES TO BE FURNISHED & INSTALLED BY RMP.
  - NEW METER-MAIN BREAKER SWITCHGEAR PROVIDED BY JVWCD AND INSTALLED BY CONTRACTOR.
  - NEW CONDUCTORS BETWEEN TRANSFORMER AND METERING CTs INSTALLED BY UTILITY IN CONDUITS INSTALLED BY CONTRACTOR.
  - METER SOCKET ENCLOSURE PROVIDED BY JVWCD AND INSTALLED BY CONTRACTOR PER UTILITY REQUIREMENTS.
  - REMOVE #12 AWG CONDUCTORS AND INSTALL THREE #10 AND #10 AWG GROUND CONDUCTORS FROM 15 KVA TRANSFORMER TO PANEL L IN WELL HOUSE.



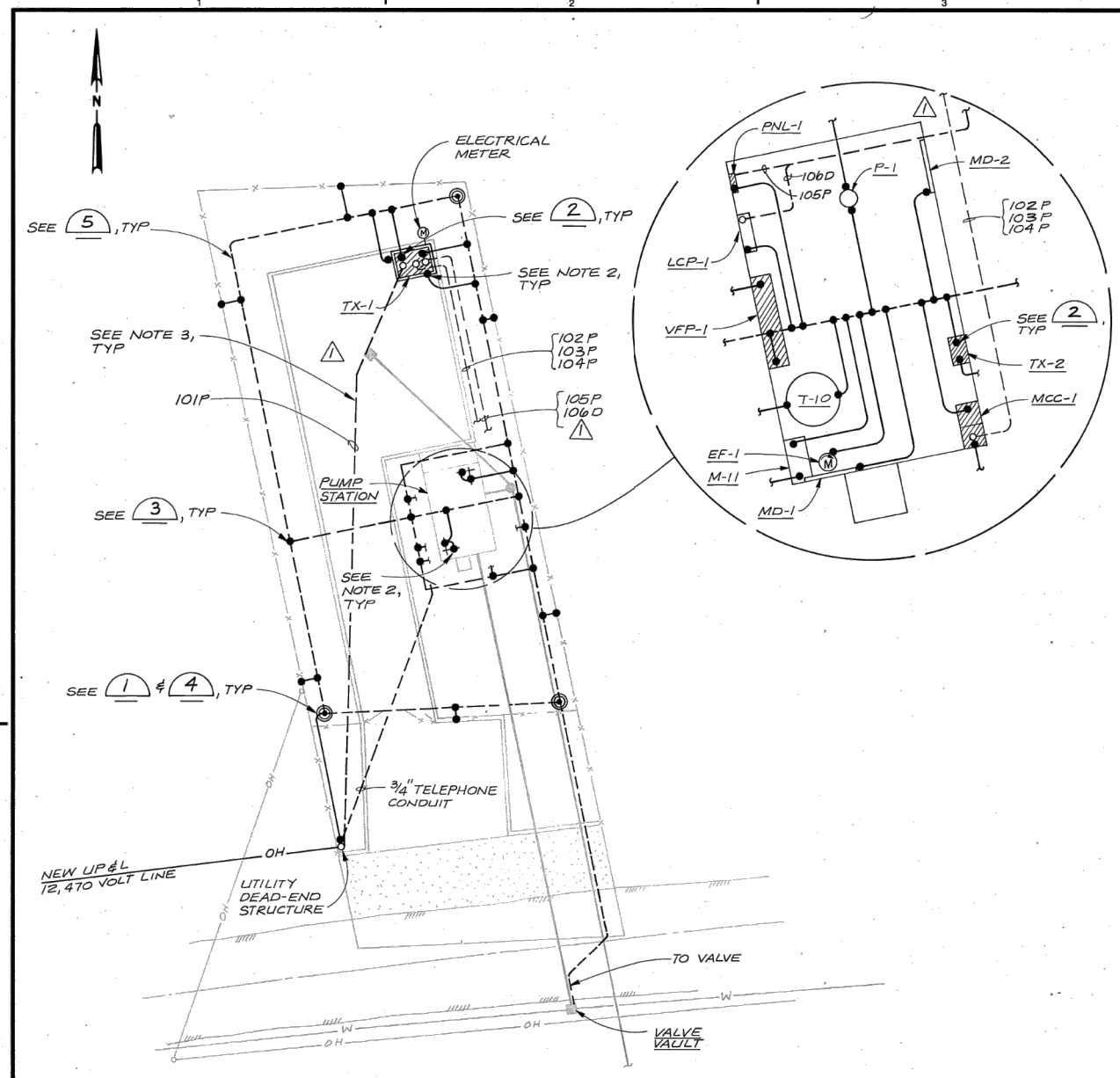
REVISIONS			
REV.	DESCRIPTION	BY	DATE



LINE IS 1/2" = 1' AT FULL SIZE (IF NOT 1" - SCALE ACCORDINGLY)	ORIGINAL SIZE <b>B</b>
SCALE: 1/2" = 1'	
DESIGN: DONALD L. OLSEN	
DRAWING: DONALD L. OLSEN	
PROJ. MGR: KEVIN RUBOW	
APPROVAL:	

1516 W 14600 S WELL ELECTRICAL IMPROVEMENTS
ONE LINE DIAGRAM & SWITCHGEAR DRAWINGS

DATE 11/3/2025
PROJECT NUMBER 4346
DRAWING NUMBER E-4
SHEET NUMBER 6 OF 7



**ELECTRICAL SITE PLAN**  
1"=20'

- NOTES:**
- 1. FOR GENERAL NOTES, SEE SHEET 10.
  - 2. GROUND CONNECTION TO SLAB REBAR. SEE 6
  - 3. CONDUITS TO BE ENCASED IN CONCRETE. SEE 2, 7 AND 8

**SLCWCD RECORD DRAWING**

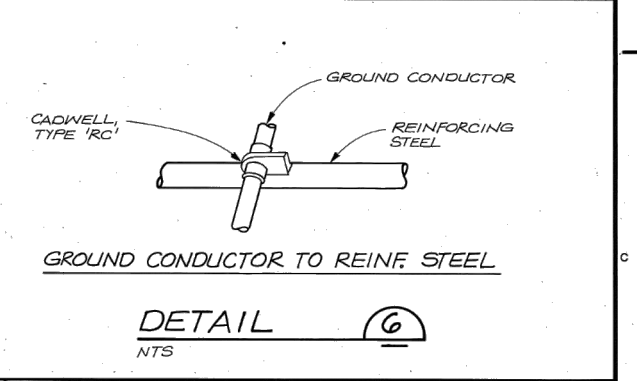
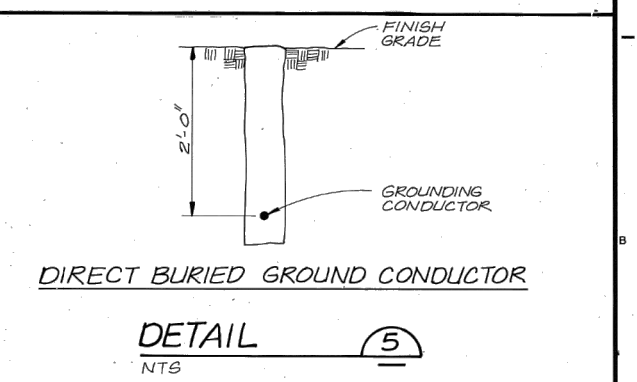
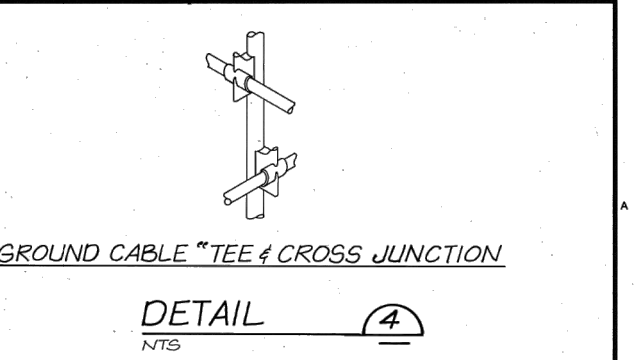
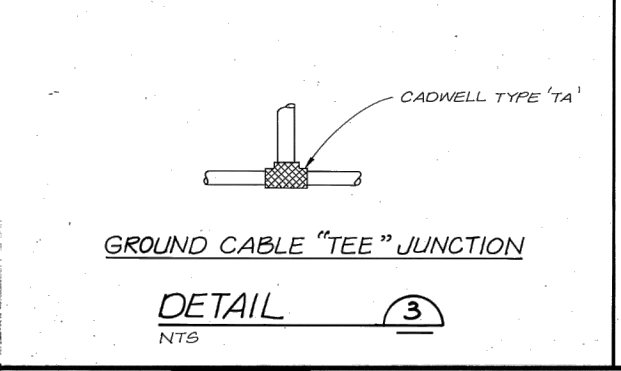
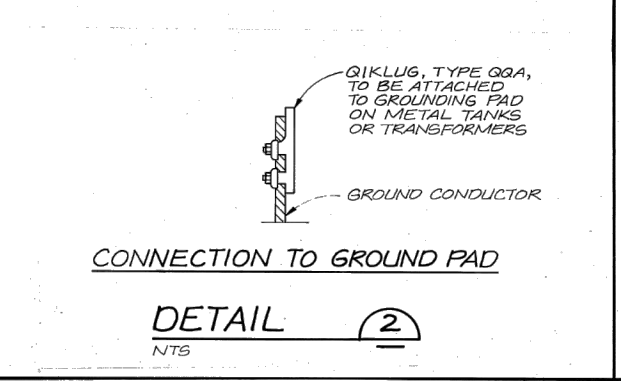
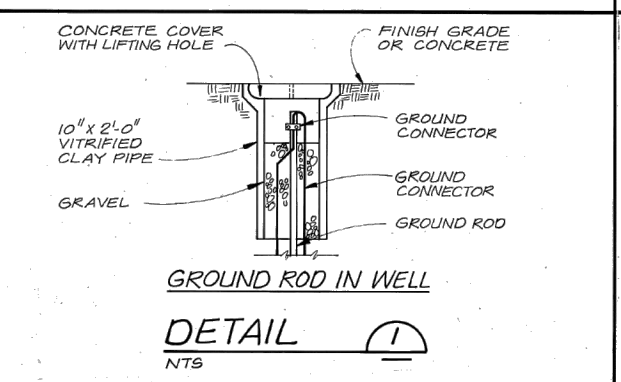
REVISIONS DRAWN BY L. WILLIAMS DATE 7-31-81  
THIS RECORD DRAWING HAS BEEN PREPARED TO REFLECT CONDITIONS AS ACTUALLY CONSTRUCTED, FROM RECORDS COMPILED DURING CONSTRUCTION BY THE CONTRACTOR AND THE ENGINEER.

*Michael Collins* 8/17/81  
PROJECT MANAGER DATE



DSGN	A.E. BOSLEY				
DR	L.E. WILLIAMS	1-87	RELOCATED IN COMING POWER CONDUIT, DELETED METERING EQUIPMENT & CONDUIT, AND ADDED POWER & INSTRUMENTATION CONDUITS TO UNIT SUBSTATION AUXILIARY EQUIPMENT	AEBY	MMCS
CHK	J. HILL				
APVD					
NO.	DATE	REVISION	BY	APVD	

- GROUNDING LEGEND**
- #4/0 BARE CU, STRANDED, SOFT DAWN
  - #6 AWG, BARE CU, STRANDED, SOFT DAWN
  - CABLE TEE CONNECTION PER DETAIL 3
  - GROUND ROD IN WELL CONNECTIONS PER DETAIL 4
  - GROUND ROD IN WELL CONNECTIONS PER DETAIL 4
  - GROUND ROD IN WELL, SEE DETAIL 1
  - GROUNDING PAD, SUPPLIED AND INSTALLED BY TANK MANUFACTURER, FOR CONNECTION TO GROUND SYSTEM, SEE DETAIL 2
  - CONNECTION FROM EQUIPMENT GROUND PAD OR BUS TO GROUND GRID



**VERIFY SCALES**  
BAR IS ONE INCH ON ORIGINAL DRAWING.  
IF NOT ONE INCH ON THIS SHEET, ADJUST SCALES ACCORDINGLY.

SALT LAKE COUNTY  
WATER CONSERVANCY DISTRICT  
1530 WEST 14600 SOUTH PUMP STATION  
SALT LAKE CITY, UTAH

**ELECTRICAL SITE PLAN,  
POWER, GROUNDING AND DETAILS**

SHEET **13**  
DATE SEPT 1986  
PROJ. NO. B21246.A1

SLCWCD PROJECT NO. 86C142F

REV.	DESCRIPTION	BY	DATE

**JORDAN VALLEY WATER  
CONSERVANCY DISTRICT**

8215 SOUTH 1300 WEST  
WEST JORDAN, UTAH 84088-0070  
PHONE (801) 565-4300

LINE IS 1 INCH AT FULL SIZE (IF NOT 1" - SCALE ACCORDINGLY)	ORIGINAL SIZE <b>B</b>
SCALE: NTS	
DESIGN: DONALD L. OLSEN	
DRAWING: DONALD L. OLSEN	
PROJ. MGR: KEVIN RUBOW	
APPROVAL:	

1516 W 14600 S WELL ELECTRICAL IMPROVEMENTS

DATE 11/3/25

PROJECT NUMBER **4346**

DRAWING NUMBER **E-5**

SHEET NUMBER **7 OF 7**

ORIGINAL GROUNDING DRAWING  
FOR REFERENCE