



Jordan Valley Water Conservancy District

8215 SOUTH 1300 WEST
WEST JORDAN, UTAH 84088
PHONE (801) 565-4300

JORDAN AQUEDUCT, REACH 4 BLOW-OFF DRAIN

4735 NORTH THANKSGIVING WAY, LEHI
PROJECT NUMBER: 4232
AUGUST 2025



Know what's below.
Call before you dig.

REVISIONS			
REV.	DESCRIPTION	BY	DATE



JORDAN VALLEY WATER
CONSERVANCY DISTRICT

8215 SOUTH 1300 WEST
WEST JORDAN, UTAH 84088-0070
PHONE (801) 565-4300

LINE IS 1 INCH AT FULL SIZE (IF NOT 1" - SCALE ACCORDINGLY)	ORIGINAL SIZE B
SCALE: NOT TO SCALE	
DESIGN: CT	
DRAWING: TMP	
PROJ. MGR: CT	
APPROVAL:	

JA-4 BLOWOFF

COVER PAGE

DATE 8/11/25
PROJECT NUMBER 4232
DRAWING NUMBER G-1
SHEET NUMBER 1 OF 7

GENERAL NOTES:

1. Utilities shown on the drawing are based on the best available information provided by others and should be considered approximate and for general information only. Information is shown for the convenience of the contractor but is not guaranteed to be either correct or complete, and all responsibility for accuracy and completeness thereof is expressly disclaimed. Contractor is responsible to locate and protect all utilities in the project area, including those that may not be shown or that may be shown incorrectly. Contractor is solely responsible for the repair of and utility damaged as a result of the contractor's activities.
2. The Contractor shall make such investigations 200' ahead of excavation to locate underground utilities and structures so as not to accidentally damage them during construction operations. The Contractor shall be responsible for repair of any underground utilities damaged during construction activities.
3. Contractor shall be responsible for contacting Blue Stakes 48 hours prior to excavating.
4. Contractor shall repair or replace all disturbed road striping, and asphalt to appropriate UDOT standards and specifications.
5. Contractor shall be responsible for all excavation, road cut, land disturbance, SWPP, and building permits with all agencies/entities impacted by construction (city, state, federal, business, private, etc).
6. Contractor shall replace all signal loops disturbed by pipeline installation activities.
7. Contractor shall be responsible for flagging, caution signs, traffic control, and public safety on all adjacent streets and construction site per UDOT.
8. Contractor shall be responsible for public safety and OSHA safety standards.
9. Contractor shall attend all pre construction and construction conferences.
10. All construction staking required by the Contractor shall be provided by the Contractor at the Contractor's expense.

11. Contractor shall be responsible for care of all construction stakes.
12. All materials and construction shall be in accordance with Jordan Valley Water Conservancy District standards and specifications.
13. All water lines shall be a minimum of 4 feet below finished grade to top of pipe unless otherwise noted.
14. All bends, tees, and other fittings in water line to be supported with concrete thrust blocks and restrained with Mega-Lug followers at joints, unless otherwise noted.
15. Contractor shall be responsible for all erosion control.
16. Contractor shall employ BMP around all storm drains.
17. Contractor shall legally dispose of all excess excavated material/debris off site unless otherwise noted.
18. Contractor shall supply redlines for preparation of record drawings.
19. Contractor shall be responsible to contact Salt Lake County Surveyor's office prior to disturbing any survey monument. Replace monuments at contractors expense.
20. Surface improvements disturbed during this work shall be replaced as part of the work. All associated costs shall be included in the contractors bid.
21. Contractor shall legally dispose of all excess excavated material off site.
22. Contractor must obtain Encroachment Permit from UDOT, Region 3.

ABBREVIATIONS:

- BMP Best Management Practices
- CTV Cable Television
- DIA Diameter
- FL Flanged
- MJ Mechanical Joint
- NTS Not to Scale
- OSHA Occupational Safety & Health Administration
- P Power Line
- PVC Polyvinyl Chloride
- SS Stainless Steel
- TYP Typical
- UDOT Utah Department of Transportation
- W Water Line



Know what's below.
Call before you dig.

REVISIONS			
REV.	DESCRIPTION	BY	DATE

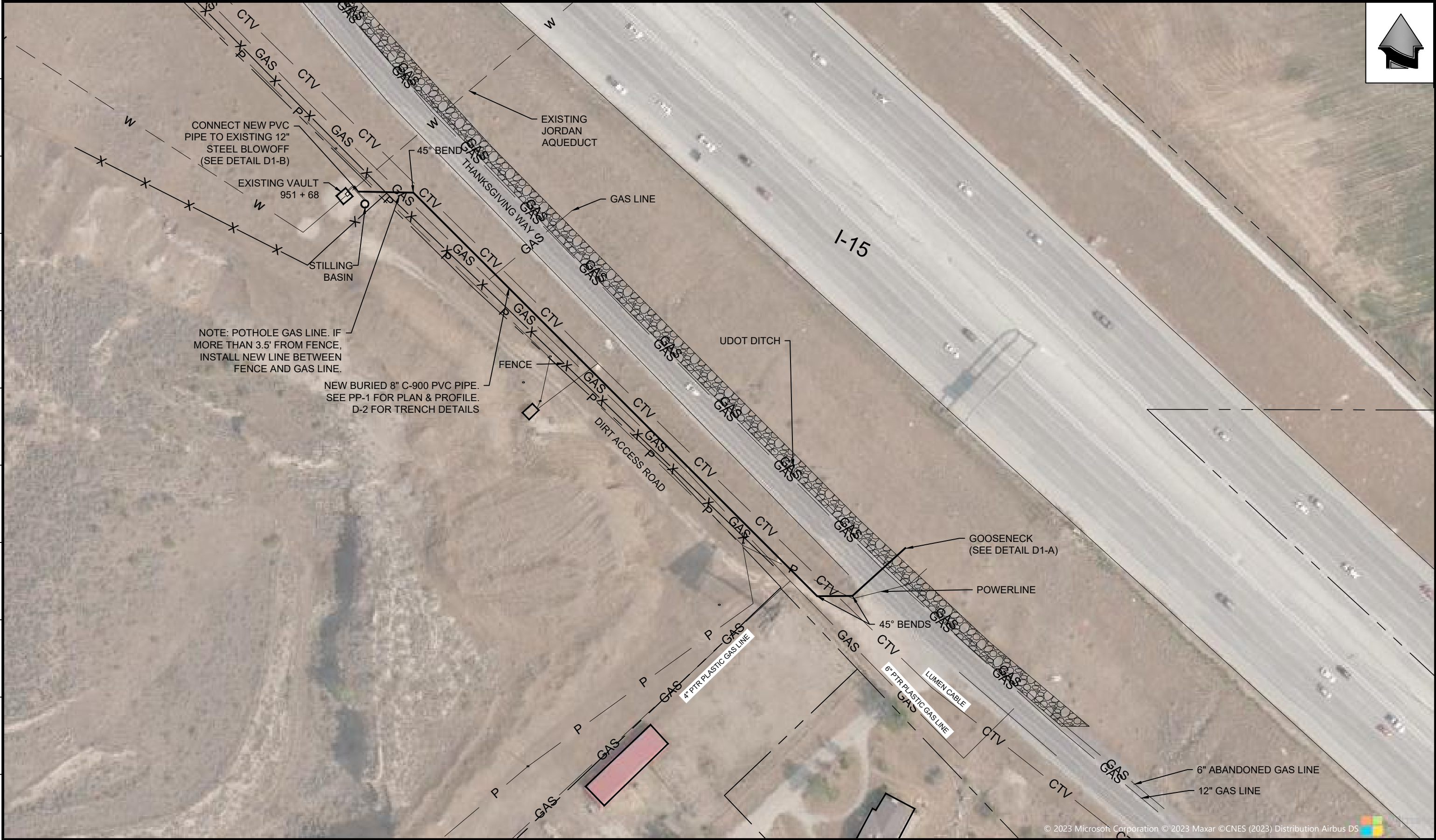


JORDAN VALLEY WATER
CONSERVANCY DISTRICT
8215 SOUTH 1300 WEST
WEST JORDAN, UTAH 84088-0070
PHONE (801) 565-4300

LINE IS 1" INCH AT FULL SIZE (IF NOT 1" - SCALE ACCORDINGLY)	ORIGINAL SIZE B
SCALE: NOT TO SCALE	
DESIGN:	CT
DRAWING:	TMP
PROJ. MGR:	CT
APPROVAL:	

JA-4 BLOWOFF	
NOTES	

DATE 3/24/25
PROJECT NUMBER 4232
DRAWING NUMBER G-2
SHEET NUMBER 2 OF 7



15.76M

I:\AQEDUCT\JA-4\4232 - JA4 BLOWOFFS\ENGINEERING\DRAWING\951_649\JA4 BLOWOFFS UTILITIES 2.DWG

REVISIONS			
REV.	DESCRIPTION	BY	DATE

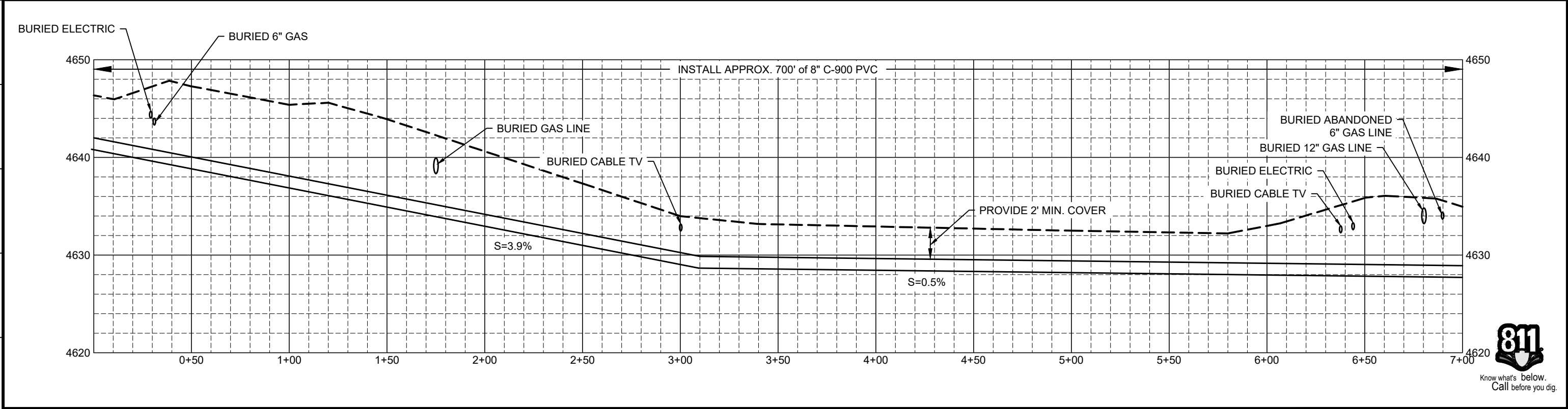
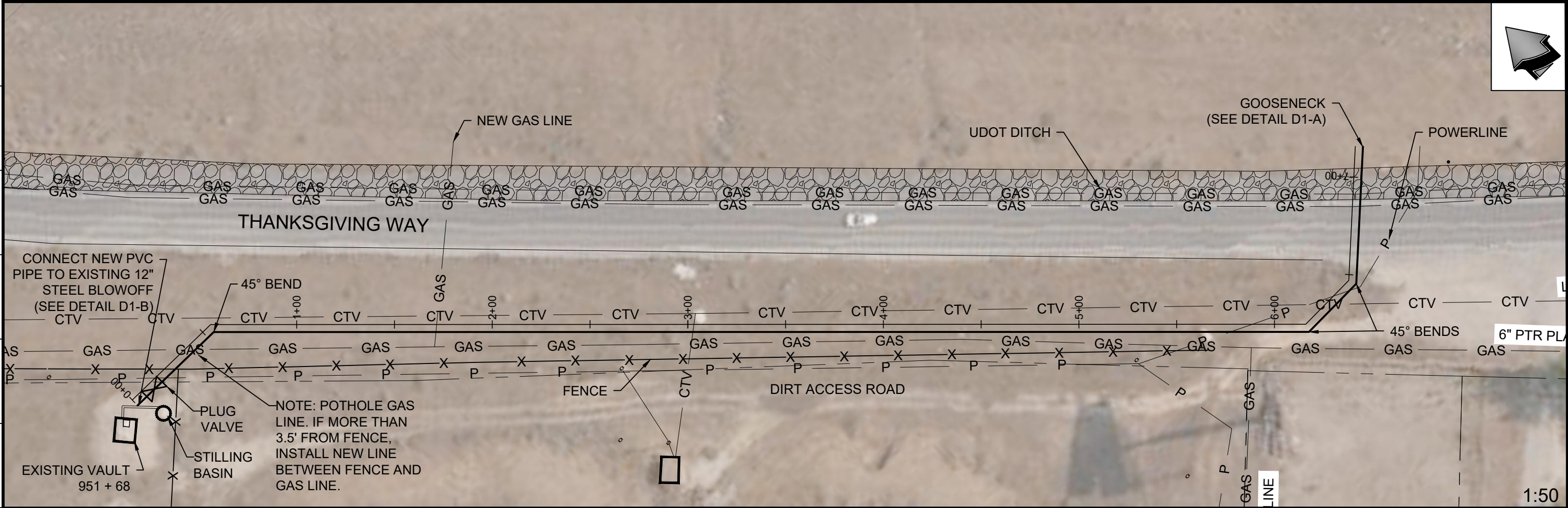


JORDAN VALLEY WATER
CONSERVANCY DISTRICT
8215 SOUTH 1300 WEST
WEST JORDAN, UTAH 84088-0070
PHONE (801) 565-4300

LINE IS 1" INCH AT FULL SIZE (IF NOT 1" - SCALE ACCORDINGLY)	ORIGINAL SIZE B
SCALE: NOT TO SCALE	
DESIGN:	CT
DRAWING:	TMP
PROJ. MGR:	CT
APPROVAL:	

JA-4 BLOWOFF	
SITE PLAN	

DATE	8/11/25
PROJECT NUMBER	4232
DRAWING NUMBER	C-1
SHEET NUMBER	3 OF 7



REVISIONS			
REV.	DESCRIPTION	BY	DATE



JORDAN VALLEY WATER
CONSERVANCY DISTRICT
8215 SOUTH 1300 WEST
WEST JORDAN, UTAH 84088-0070
PHONE (801) 565-4300

LINE IS 1" INCH AT FULL SIZE (IF NOT 1" - SCALE ACCORDINGLY)	ORIGINAL SIZE B
SCALE: AS NOTED	
DESIGN:	CT
DRAWING:	TMP
PROJ. MGR:	CT
APPROVAL:	

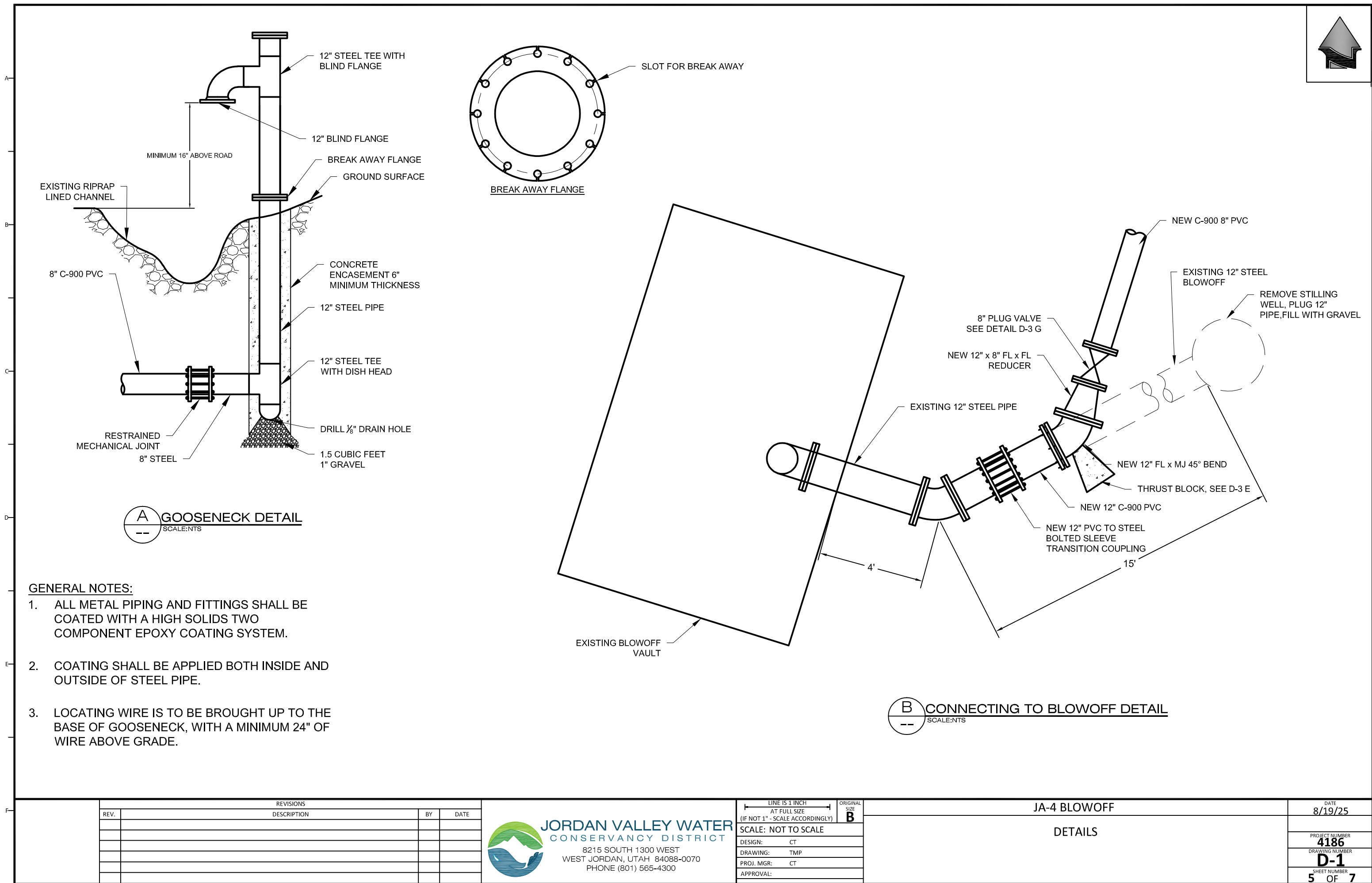
JA-4 BLOWOFF
PLAN & PROFILE

DATE 8/19/25
PROJECT NUMBER 4186
DRAWING NUMBER PP-1
SHEET NUMBER 4 OF 7

I:\AQEDUCT\JA-4\232 - JA4 BLOWOFFS\ENGINEERING\DRAWING\951_649\JA4 BLOWOFFS UTILITIES PLAN AND PROFILE.DWG 15.63M



15.69M



GENERAL NOTES:

1. ALL METAL PIPING AND FITTINGS SHALL BE COATED WITH A HIGH SOLIDS TWO COMPONENT EPOXY COATING SYSTEM.
2. COATING SHALL BE APPLIED BOTH INSIDE AND OUTSIDE OF STEEL PIPE.
3. LOCATING WIRE IS TO BE BROUGHT UP TO THE BASE OF GOOSENECK, WITH A MINIMUM 24" OF WIRE ABOVE GRADE.

REVISIONS			
REV.	DESCRIPTION	BY	DATE



JORDAN VALLEY WATER
CONSERVANCY DISTRICT
8215 SOUTH 1300 WEST
WEST JORDAN, UTAH 84088-0070
PHONE (801) 565-4300

LINE IS 1" = 1' AT FULL SIZE (IF NOT 1" - SCALE ACCORDINGLY)	ORIGINAL SIZE B
SCALE: NOT TO SCALE	
DESIGN:	CT
DRAWING:	TMP
PROJ. MGR:	CT
APPROVAL:	

JA-4 BLOWOFF

DETAILS

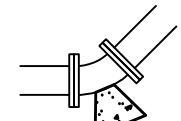
DATE	8/19/25
PROJECT NUMBER	4186
DRAWING NUMBER	D-1
SHEET NUMBER	5 OF 7

I:\QA\BLOWOFFS\ENGINEERING\DRAWING\951_649\JA4 BLOWOFFS UTILITIES 2.DWG

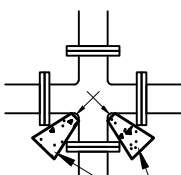
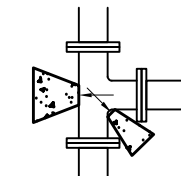


15.75M

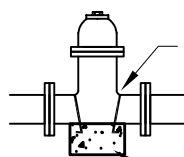
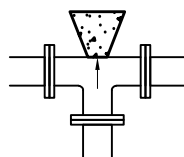
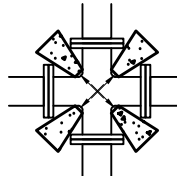
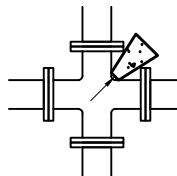
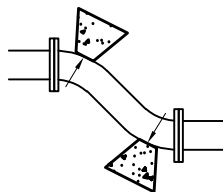
A
B
C
D
E
F



BEARING AREA (TYP)



THE AREA OF BEARING PER THRUST BLOCK TO EQUAL 1/2 THE AREA SPECIFIED FOR THE LARGEST PIPE OR FITTING.

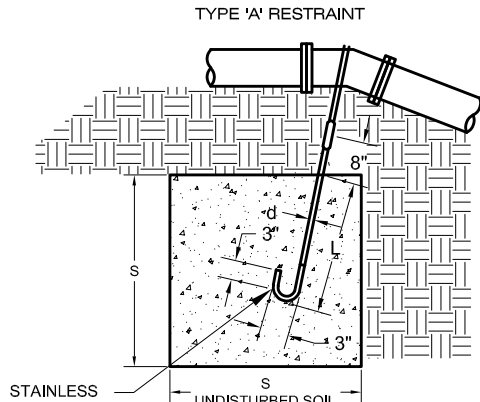


#4 EPOXY COATED REBAR WITH 12" MIN. EMBEDMENT

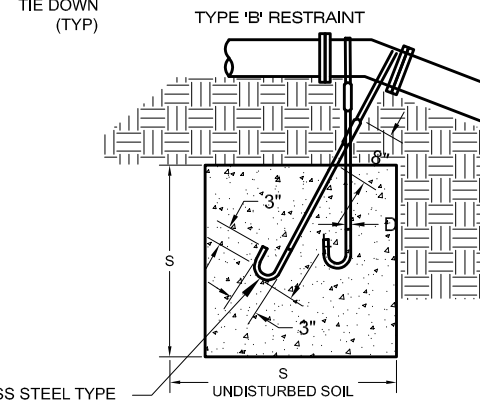
INSTALL THRUST RESTRAINT SEE PLAN No. 562 (TYP) (MJ AND PUSH-ON JOINTS)

MINIMUM BEARING ARE IN SQ. FT.					
SIZE OF PIPE	TEES, VALVES DEAD ENDS	90° BENDS	45° BENDS	22 1/2° BENDS	11 1/4° BENDS
4"	2	3	2	2	2
6"	4	5.5	3	1.5	1
8"	6.5	9.5	5	2.75	1.5
12"	14	20	11	5.5	3
14"	19	26.5	14.5	7.5	4
16"	24	34	18.5	9.5	6
20"	27	52	28.5	14.5	16
24"	53	74	41	21	53
30"	81	114	62	32	16

E TYPICAL THRUST BLOCK
SCALE: NTS



TYPE 'A' RESTRAINT



TYPE 'B' RESTRAINT

STAINLESS STEEL TYPE 304 TIE DOWN (TYP)

TYPE 'A' RESTRAINT
FOR 11 1/4° - 22 1/2° VERTICAL BENDS

TABLE OF DIMENSIONS					
PPE SIZE NOMIN. DIAMETER - INCH	VB	S	d	L	
	VERTICAL BEND DEGREES	NO. OF CU FT. OF CONC. BLOCKING	SIDE OF CUBE FEET	DIAMETER OF SHACK OR REBAR RODS-INCH	DEPTH OF RODS IN CONCRETE FT.
4"	11.25°	8	20	5/8"	1.5
	22.5°	15.6	2.5	5/8"	2.0
6"	11.25°	15.6	2.5	5/8"	2.0
	22.5°	34.3	3.25	5/8"	2.0
8"	11.25°	27	3.0	5/8"	2.0
	22.5°	64	4.0	5/8"	2.0
10"	11.25°	45.5	3.5	3/4"	2.0
	22.5°	94.5	4.5	3/4"	3.0
12"	11.25°	64	4.0	3/4"	2.0
	22.5°	125	5.0	3/4"	3.0
14"	11.25°	86	4.4	3/4"	2.0
	22.5°	171	5.6	3/4"	3.0
16"	11.25°	107	4.25	7/8"	3.0
	22.5°	216	6.0	7/8"	4.0

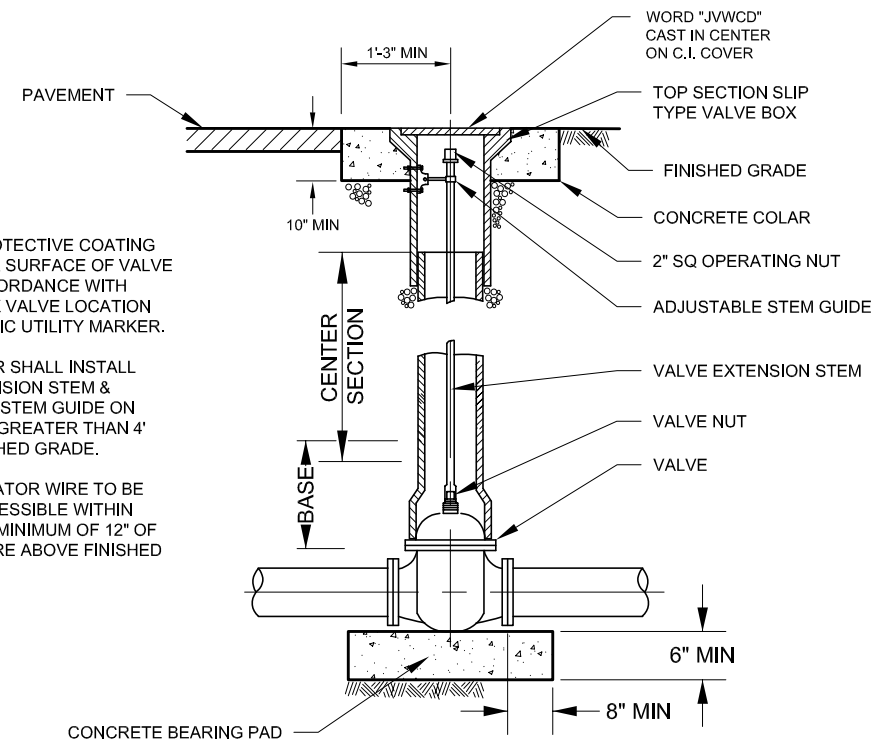
F TYPICAL VERTICAL THRUST BLOCK
SCALE: NTS

- NOTES:
- CONCRETE SHALL BE 4,000 PSI.
 - MIN YIELD STRENGTH OF STEEL TIE-DOWN BARS IS 70,000 PSI.
 - POUR CONCRETE AGAINST UNDISTURBED SOILS.
 - APPLY GREASE TO ALL BURIED METAL SURFACES.

TYPE 'B' RESTRAINT
FOR 45° VERTICAL BENDS

TABLE OF DIMENSIONS					
PPE SIZE NOMIN. DIAMETER - INCH	VB	S	d	L	
	VERTICAL BEND DEGREES	NO. OF CU FT. OF CONC. BLOCKING	SIDE OF CUBE FEET	DIAMETER OF SHACK OR REBAR RODS-INCH	DEPTH OF RODS IN CONCRETE FT.
4"	45°	1	3.0	5/8"	2.0
				5/8"	
6"	45°	2.37	4.0	5/8"	2.5
				5/8"	
8"	45°	3.97	4.75	5/8"	2.0
				5/8"	
10"	45°	6.51	5.50	5/8"	3.0
				5/8"	
12"	45°	9.04	6.25	5/8"	4.0
				5/8"	
14"	45°	12.70	7.00	5/8"	4.0
				5/8"	
16"	45°	17.24	7.75	3/4"	4.0
				3/4"	

- NOTES:
- PROVIDE PROTECTIVE COATING TO EXTERIOR SURFACE OF VALVE BODY IN ACCORDANCE WITH SPECS. MARK VALVE LOCATION W/FRP/PLASTIC UTILITY MARKER.
 - CONTRACTOR SHALL INSTALL VALVE EXTENSION STEM & ADJUSTABLE STEM GUIDE ON VALVE NUTS GREATER THAN 4' BELOW FINISHED GRADE.
 - INSTALL LOCATOR WIRE TO BE READILY ACCESSIBLE WITHIN VALVE BOX. MINIMUM OF 12" OF LOCATOR WIRE ABOVE FINISHED GRADE.



G TYPICAL VALVE BOX
SCALE: NTS

1 2 3 4 5 6 7 8

REVISIONS			
REV.	DESCRIPTION	BY	DATE



LINE IS 1" INCH AT FULL SIZE (IF NOT 1" - SCALE ACCORDINGLY)	ORIGINAL SIZE B
SCALE: NOT TO SCALE	
DESIGN:	CT
DRAWING:	TMP
PROJ. MGR:	CT
APPROVAL:	

JA-4 BLOWOFF

GENERAL DETAILS

DATE	8/11/25
PROJECT NUMBER	4186
DRAWING NUMBER	D-3
SHEET NUMBER	7 OF 7

I:\QAQUEDUCT\JA-4\4232 - JA4 BLOWOFFS\ENGINEERING\DRAWING\951_649\JA4 BLOWOFFS UTILITIES 2.DWG