



Jordan Valley Water Conservancy District

8215 SOUTH 1300 WEST
WEST JORDAN, UTAH 84088
PHONE (801) 565-4300

JORDAN NARROWS PUMP STATION (JNPS) VALVE REPLACEMENT

1001 WEST JORDAN NARROWS ROAD
BLUFFDALE, UTAH 84065

PROJECT NUMBER: 4377
MAY 2025

CONTRACT DOCUMENTS
VOLUME 2 OF 2



Know what's below.
Call before you dig.

REVISIONS			
REV.	DESCRIPTION	BY	DATE



**JORDAN VALLEY WATER
CONSERVANCY DISTRICT**
8215 SOUTH 1300 WEST
WEST JORDAN, UTAH 84088-0070
PHONE (801) 565-4300

LINE IS 1 INCH AT FULL SIZE (IF NOT 1" - SCALE ACCORDINGLY)	ORIGINAL SIZE B
SCALE: NOT TO SCALE	
DESIGN: -	
DRAWING: JCS	
PROJ. MGR: JCS	
APPROVAL:	

JNPS VALVE REPLACEMENT

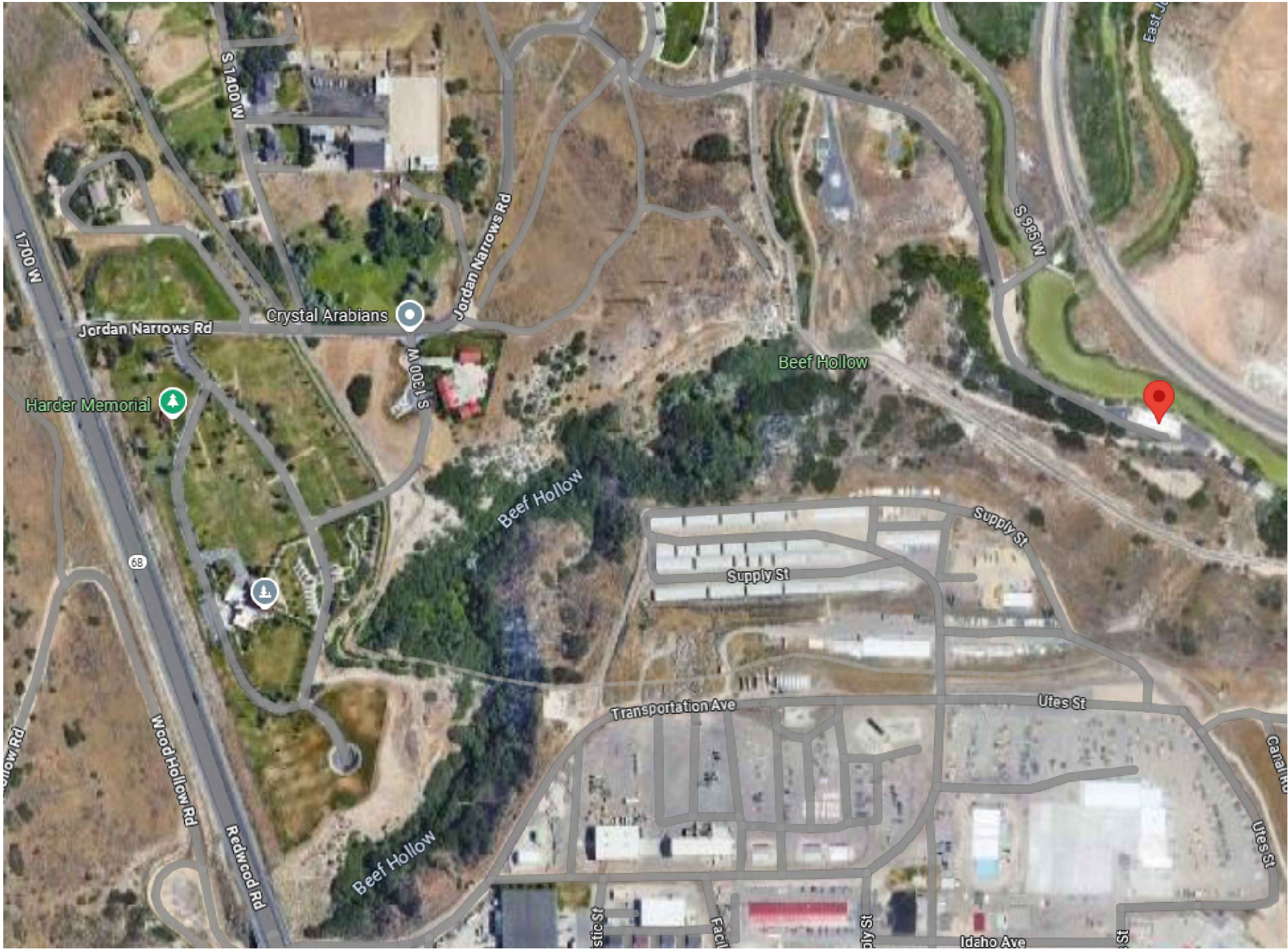
COVER SHEET

DATE
5/27/25

PROJECT NUMBER
4377

DRAWING NUMBER
G1

SHEET NUMBER
1 OF 6



JORDAN NARROWS PUMP STATION (JNPS) VALVE REPLACEMENT
1001 WEST JORDAN NARROWS ROAD, BLUFFDALE UTAH 84065

REVISIONS					JORDAN VALLEY WATER CONSERVANCY DISTRICT 8215 SOUTH 1300 WEST WEST JORDAN, UTAH 84088-0070 PHONE (801) 565-4300	JNPS VALVE REPLACEMENT		DATE
REV.	DESCRIPTION	BY	DATE			PROJECT LOCATION		5/27/25
								PROJECT NUMBER 4377
								DRAWING NUMBER G2
								SHEET NUMBER 2 OF 6

LINE IS 1 INCH AT FULL SIZE (IF NOT 1" - SCALE ACCORDINGLY)	ORIGINAL SIZE B
SCALE: NOT TO SCALE	
DESIGN: -	
DRAWING: JCS	
PROJ. MGR: JCS	
APPROVAL:	

SHEET LIST

DWG NO.	SHEET DESCRIPTION	SHEET NO.
G1 G2 G3 G4	GENERAL SHEETS	1 2 3 4
	COVER SHEET	
	PROJECT LOCATION	
	GENERAL NOTES	
M1 M2	MECHANICAL SHEETS	5 6
	DEMO PLAN	
	REPLACEMENT PLAN	

GENERAL NOTES

1. CONTRACTOR WILL BE RESPONSIBLE FOR CORRECTING ANY SETTLEMENT OF OR DAMAGE TO EXISTING UTILITIES/PIPELINES.
2. CONTRACTOR WILL BE RESPONSIBLE FOR ANY DAMAGE TO AND REPAIR OF ADJACENT SURFACE IMPROVEMENTS OR FACILITIES DURING CONSTRUCTION.
3. CONTRACTOR IS RESPONSIBLE TO FURNISH ALL MATERIALS NECESSARY TO COMPLETE THE PROJECT.
4. CONDUCT CONSTRUCTION OPERATIONS AND PLACE SIGNS, BARRICADES, AND FLASHERS TO COMPLY WITH OSHA, LOCAL SAFETY STANDARDS, THE UTAH STATE INDUSTRIAL COMMISSION, AND THE MANUAL ON UNIFORM TRAFFIC CONTROL DEVICES (ANSI D6.1).
5. THE CONTRACTOR IS RESPONSIBLE FOR VERIFICATION OF ALL DIMENSIONS AND CONDITIONS ONSITE AS ADDRESSED IN THE STRUCTURAL DOCUMENTS.
6. ANY CONFLICTS OR OMISSIONS OF THE EXISTING DRAWINGS SHALL BE BROUGHT TO THE ATTENTION OF THE ENGINEER OF RECORD BEFORE WORK IS TO CONTINUE FORWARD.
7. THE CONTRACTOR IS RESPONSIBLE FOR THE SAFETY OF ALL PERSONS WITHIN AND ADJACENT TO THE JOBSITE.
8. ANY AND ALL SITE VISITS/OBSERVATIONS BY THE ENGINEER OF RECORD OR HIS/HER REPRESENTATIVES ARE NOT TO BE INTERPRETED AS SPECIAL INSPECTION OR APPROVAL ON ANY WORK PERFORMED ON THE JOBSITE.
9. PROVIDE SHOP DRAWINGS SUBMITTALS PRIOR TO THE FABRICATION OR ERECTION OF ANY STRUCTURAL COMPONENTS.

STRUCTURAL DESIGN CRITERIA

1. BUILDING CODE: INTERNATIONAL BUILDING CODE (IBC) 2018; PUBLISHED BY INTERNATIONAL CODE COUNCIL, INC.
2. AMERICAN NATIONAL STANDARDS INSTITUTE CODE, ASCE 7-16 MINIMUM DESIGN LOADS FOR BUILDINGS AND OTHER STRUCTURES; PUBLISHED BY AMERICAN NATIONAL STANDARDS INSTITUTE, INC.
3. STEEL DESIGN CODE: SPECIFICATION FOR STRUCTURAL STEEL BUILDINGS, LOAD AND RESISTANCE FACTOR DESIGN (LRFD); PUBLISHED BY THE AMERICAN INSTITUTE OF STEEL CONSTRUCTION.
4. CONCRETE DESIGN CODE: BUILDING CODE REQUIREMENTS FOR STRUCTURAL CONCRETE, ACI 318-14; PUBLISHED BY AMERICAN CONCRETE INSTITUTE.
5. STRUCTURAL WELDING CODE: AWS D-1.1, PUBLISHED BY AMERICAN WELDING SOCIETY

STEEL NOTES

1. PROVIDE ALL STEEL SECTIONS SPECIFIED WITHIN THE STRUCTURAL DOCUMENTS PER
SECTION SPECIFICATIONS OF AISC AS FOLLOWS UNLESS NOTED OTHERWISE:

PIPE

ANCHOR BOLTS

A

ASTM A53 GRADE B

ASTM A307 GRADE
2. MISCELLANEOUS ANCHOR BOLTS, EXPANSION ANCHORS, ANCHOR RODS, AND FASTENERS NOT INDICATED, BUT REQUIRED FOR ANCHORAGE OF EQUIPMENT AND MATERIALS, SHALL BE PROVIDED (AS RECOMMENDED BY MANUFACTURER OF ITEMS). ANCHORAGE WILL BE SUBJECT TO REVIEW BY ENGINEER.
3. CONTRACTOR SHALL FURNISH AND INSTALL MISCELLANEOUS STEEL ITEMS NOT SHOWN BUT NECESSARY FOR COMPLETE CONSTRUCTION OF PROJECT.
5. WELD SYMBOLS SHOWN MAY NOT DISTINGUISH BETWEEN FIELD AND SHOP WELDING.
CONTRACTOR SHALL PROVIDE AS MUCH WELDING AS PRACTICAL IN THE SHOP.
CONTRACTOR'S SHOP DRAWINGS SHALL SHOW ALL WELDING AND DISTINGUISH BETWEEN FIELD AND SHOP WELDING.
6. WHERE FILLET WELD SIZES ARE NOT NOTED ON DRAWINGS, PROVIDE MINIMUM SIZE IN ACCORDANCE WITH AWS D1.1. ALL OTHER TYPE WELDS NOT SIZED ON DRAWINGS SHALL DEVELOP FULL STRENGTH OF MEMBERS ATTACHED.
7. WELDING WILL BE ALLOWED ONLY AT SCHEDULED TIMES AND IN LOCATIONS CONSISTENT WITH OWNER'S PLANT OPERATIONS.

8. PROVIDE ALL CONNECTIONS WITHIN THESE STRUCTURAL DOCUMENTS WITH E70XX ELECTRODES. PERFORM WELDS AS REQUIRED BY AWS SPECIFICATIONS FOR 'SMAW' PROCESS.

9. MINIMUM REQUIRED FILLET WELD THICKNESS AS REQUIRED PER BASE MATERIAL THICKNESS (AISC LRFD FIFTEENTH ED):

MATERIAL THICKNESS (IN.)	MIN FILLET WELD (IN.)
UPTO 1/4	1/8
OVER 1/4 TO 1/2	3/16
OVER 1/2 TO 3/4	1/4
OVER 3/4	5/16

DO NOT WELD ANCHORS UNLESS NOTED OTHERWISE.

FIELD MEASURMENT NOTES

1. ALL DIMENSIONS OF EXISTING CONSTRUCTION ARE APPROXIMATE; CONTRACTOR SHALL MAKE ALL NECESSARY FIELD MEASUREMENTS OF EXISTING STRUCTURES, BREECHING AND EQUIPMENT TO VERIFY DIMENSIONS SHOWN ON DRAWINGS AND TO PROVIDE DIMENSIONS NOT SHOWN, PRIOR TO FABRICATION. COSTS FOR MODIFICATIONS OF NEW CONSTRUCTION, DUE TO LACK OF CONFIRMATION OF DIMENSIONS BY FIELD MEASUREMENTS SHALL BE BORNE BY CONTRACTOR.
2. CONTRACTOR'S STRUCTURAL STEEL DETAILER SHALL MAKE NECESSARY FIELD MEASUREMENTS OF EXISTING STRUCTURAL STEEL CONNECTIONS TO ENSURE NEW CONNECTION DETAILS SHOWN ON SHOP DRAWINGS ARE COMPATIBLE WITH EXISTING CONNECTIONS AND ARE CONSTRUCTABLE AS DETAILED.

EXISTING CONDITIONS

1. THE CONTRACTOR IS RESPONSIBLE TO PROVIDE ALL MEANS AND METHODS REQUIRED FOR SUFFICIENT SHORING OF THE EXISTING STRUCTURE AS REQUIRED FOR INDIVIDUAL MEMBER MODIFICATIONS OR REPLACEMENT.
2. CONTRACTOR IS TO NOTIFY THE ENGINEER OF RECORD CONCERNING ANY DISCREPENCIES BETWEEN THE STRUCTURAL DOCUMENTS & EXISTING CONDITIONS AT OR ADJACENT TO ANY LOCATION ADDRESSED FOR MODIFICATION WITHIN THESE DOCUMENTS.

REVISIONS			
REV.	DESCRIPTION	BY	DATE



JORDAN VALLEY WATER
CONSERVANCY DISTRICT
8215 SOUTH 1300 WEST
WEST JORDAN, UTAH 84088-0070
PHONE (801) 565-4300

LINE IS 1 INCH AT FULL SIZE (IF NOT 1" - SCALE ACCORDINGLY)	ORIGINAL SIZE B
SCALE: NOT TO SCALE	
DESIGN: -	
DRAWING: JCS	
PROJ. MGR: JCS	
APPROVAL:	

JNPS VALVE REPLACEMENT	DATE 5/27/25
GENERAL NOTES	
PROJECT NUMBER 4377	
DRAWING NUMBER G3	
SHEET NUMBER 3 OF 6	

ABBREVIATIONS

ADJ	ADJUSTABLE
EX	EXISTING
FIG	FIGURE
FLG, FLG'D	FLANGED
FS	FORGED STEEL
GALV	GALVANIZED
GRV	GROOVED END
HP	HORSEPOWER
LB	POUND
MAX	MAXIMUM
MIN	MINIMUM
NPT	NATIONAL PIPE THREAD
NTS	NOT TO SCALE
OD	OUTER DIAMETER
OSHA	OCCUPATIONAL SAFETY AND HEALTH ORGANIZATION
SS	STAINLESS STEEL
THRD	THREADED
TYP	TYPICAL

NOTES:

ALL OTHER ABBREVIATIONS USED ON PLANS
AND SPECS ARE AS EXPLAINED IN ANSI/ASME
Y1.1 (AMERICAN NATIONAL STANDARDS
INSTITUTE/AMERICAN SOCIETY OF MECHANICAL
ENGINEERS Y1.1)

	REVISIONS				 <div>JORDAN VALLEY WATER CONSERVANCY DISTRICT 8215 SOUTH 1300 WEST WEST JORDAN, UTAH 84088-0070 PHONE (801) 565-4300</div>	<div>LINE IS 1 INCH AT FULL SIZE (IF NOT 1" - SCALE ACCORDINGLY)</div> <div>SCALE: NOT TO SCALE</div> <div>DESIGN: -</div> <div>DRAWING: JCS</div> <div>PROJ. MGR: JCS</div> <div>APPROVAL:</div>	ORIGINAL SIZE B	JNPS VALVE REPLACEMENT		DATE 5/27/25
	REV.	DESCRIPTION	BY	DATE				ABBREVIATIONS		PROJECT NUMBER 4377
										DRAWING NUMBER G4
										SHEET NUMBER 4 OF 6

EQUIPMENT:

- 100

REMOVE 18"Ø CHECK VALVE
- 101

PROTECT AND REMOVE 18"Ø PIPE
- 102

REMOVE 18"Ø BUTTERFLY VALVE
- 103

REMOVE 24"Ø CHECK VALVE
- 104

PROTECT AND REMOVE 24"Ø PIPE
- 104

REMOVE 24"Ø BUTTERFLY VALVE
- 106

REMOVE 20"Ø CHECK VALVE
- 107

PROTECT AND REMOVE 20"Ø PIPE
- 108

REMOVE 20"Ø BUTTERFLY VALVE
- 109

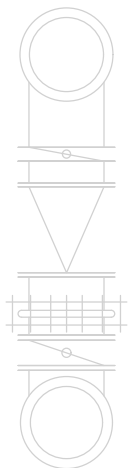
REMOVE 30"Ø CHECK VALVE
- 110

PROTECT AND REMOVE 30"Ø PIPE
- 111

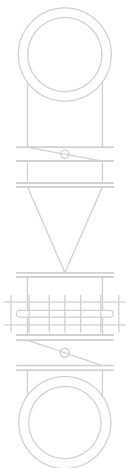
REMOVE 30"Ø BUTTERFLY VALVE

NOTES:

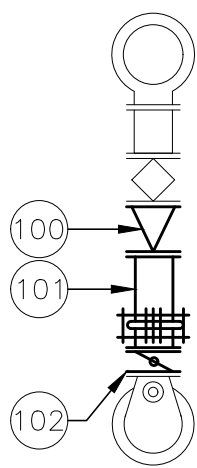
1. VERIFY ALL DIAMETERS AND LAY LENGTHS IN FIELD PRIOR TO PURCHASING NEW EQUIPMENT.
2. PROTECT AND REMOVE 4"Ø BY-PASS PIPING ON ALL PUMPS. BY-PASS PIPING NOT SHOWN FOR CLARITY.
3. JWCD OWNED TROLLEY CRANE MAY BE REQUIRED TO MOVE EQUIPMENT. COORDINATE USE WITH JWCD.
4. CONTRACTOR MAY REMOVE/REINSTALL STAIR AS NEEDED TO ACCESS P-1, P-7, AND P-8.



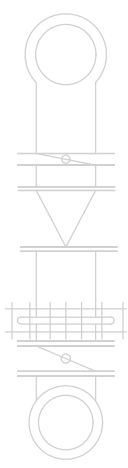
FUTURE
P-9



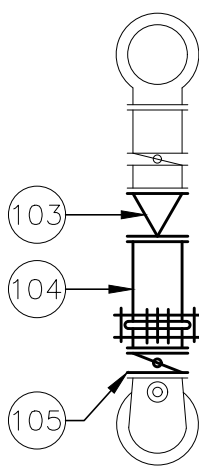
FUTURE
P-10



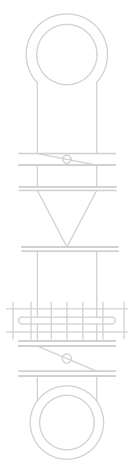
P-1



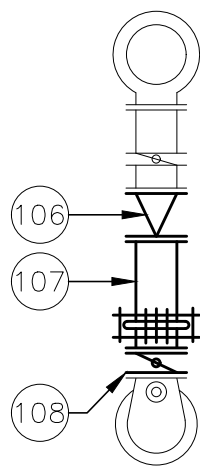
FUTURE
P-2



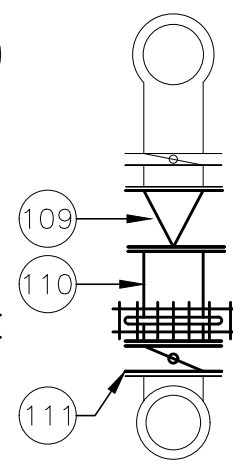
P-3



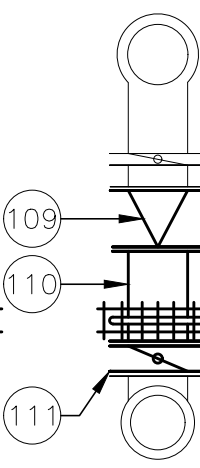
FUTURE
P-4



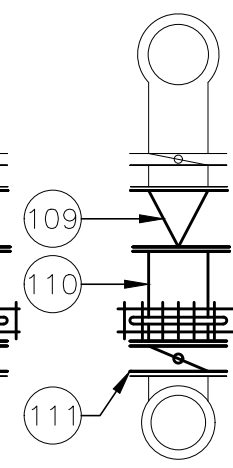
P-5



P-6



P-7



P-8

A

M1

SECTION
SCALE: NTS
FILE:

REVISIONS			
REV.	DESCRIPTION	BY	DATE



JORDAN VALLEY WATER
CONSERVANCY DISTRICT
8215 SOUTH 1300 WEST
WEST JORDAN, UTAH 84088-0070
PHONE (801) 565-4300

LINE IS 1 INCH AT FULL SIZE (IF NOT 1" - SCALE ACCORDINGLY)	
SCALE: NOT TO SCALE	
DESIGN:	-
DRAWING:	JCS
PROJ. MGR:	JCS
APPROVAL:	

JNPS VALVE REPLACEMENT	
DEMO PLAN	

DATE	5/27/25
PROJECT NUMBER	4377
DRAWING NUMBER	M1
SHEET NUMBER	5 OF 6

EQUIPMENT:

- 100

INSTALL NEW 18"Ø CHECK VALVE
- 101

REINSTALL 18"Ø PIPE
- 102

INSTALL NEW 18"Ø BUTTERFLY VALVE
- 103

INSTALL NEW 24"Ø CHECK VALVE
- 104

REINSTALL 24"Ø PIPE
- 104

INSTALL NEW 24"Ø BUTTERFLY VALVE

106

INSTALL NEW 20"Ø CHECK VALVE

107

REINSTALL 20"Ø PIPE

108

INSTALL NEW 20"Ø BUTTERFLY VALVE

109

INSTALL NEW 30"Ø CHECK VALVE

110

REINSTALL 30"Ø PIPE

111

INSTALL NEW 30"Ø BUTTERFLY VALVE

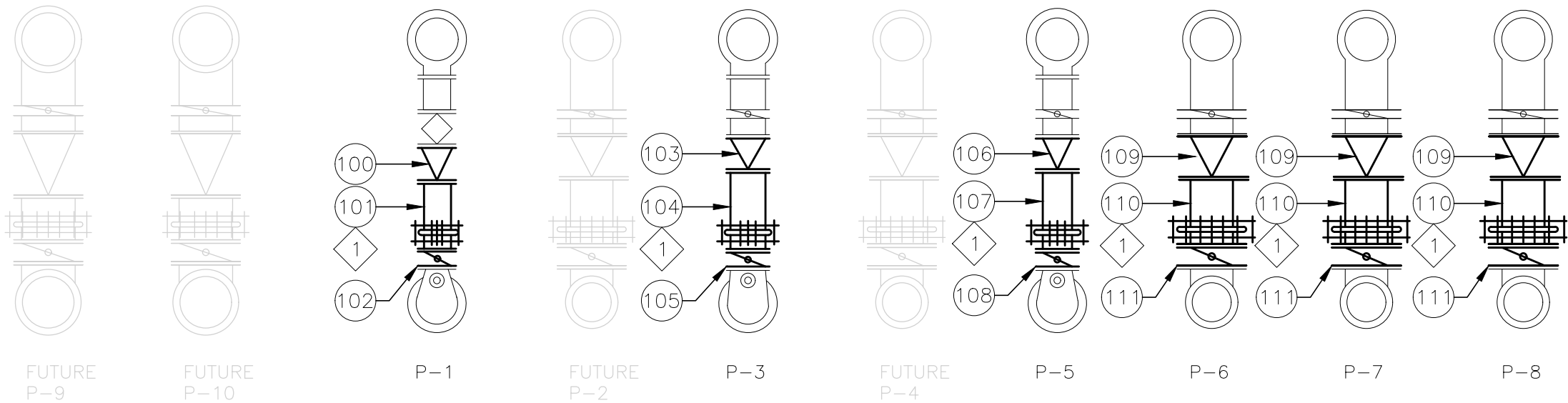
KEY NOTES:

- 1

PROVIDE NEW VICTAULIC GASKET UPON REINSTALLATION OF PIPE

NOTES:

1. VERIFY ALL DIAMETERS AND LAY LENGTHS IN FIELD PRIOR TO PURCHASING NEW EQUIPMENT.
2. REINSTALL 4"Ø BY-PASS PIPING ON ALL PUMPS. BY-PASS PIPING NOT SHOWN FOR CLARITY.
3. JVVCD OWNED TROLLEY CRANE MAY BE REQUIRED TO MOVE EQUIPMENT. COORDINATE USE WITH JVVCD.
4. CONTRACTOR MAY REMOVE/REINSTALL STAIR AS NEEDED TO ACCESS P-1, P-7, AND P-8.
5. FIELD APPLY EPOXY PRIMER AND TOPCOAT TO BOLTS (HEAD AND TAIL), NUTS, FITTINGS, AND VALVES TO MATCH EXISTING PIPING TOPCOAT.



A

M2

SECTION

SCALE: NTS

FILE:

REVISIONS			
REV.	DESCRIPTION	BY	DATE



JORDAN VALLEY WATER
CONSERVANCY DISTRICT
8215 SOUTH 1300 WEST
WEST JORDAN, UTAH 84088-0070
PHONE (801) 565-4300

LINE IS 1 INCH AT FULL SIZE (IF NOT 1" - SCALE ACCORDINGLY)	ORIGINAL SIZE B
SCALE: NOT TO SCALE	
DESIGN:	-
DRAWING:	JCS
PROJ. MGR:	JCS
APPROVAL:	

JNPS VALVE REPLACEMENT	
NEW EQUIPMENT	

DATE	5/27/25
PROJECT NUMBER	4377
DRAWING NUMBER	M2
SHEET NUMBER	6 OF 6