



**JORDAN VALLEY WATER  
CONSERVANCY DISTRICT**

**JVWTP FILTER AND  
CHEMICAL FEED  
UPGRADES PROJECT**

**MEETING**



**carollo®  
Jacobs**

**Infinity Corrosion  
GROUP, INC.**  
Corrosion Engineers



# Contractor Pre-Bid Meeting

◆ March 26, 2025
◆ JVWTP


## Meeting Agenda

*JVWCD Attendees:*  
Stephen Blake

*Contractor Attendees:*  
\_\_\_\_\_

*Design Consultant Attendees:*  
Alan Domonoske  
Austin Peters  
Stetson Bassett  
Brad Buswell  
Michal Lieberman

Approx. Time	Discussion Topic
2:00 PM	Welcome/Intro/Purpose
2:10 PM	Process Areas/Facilities Overview
2:30 PM	Break
2:45 PM	Site Walk



# Introductions



JORDAN VALLEY WATER  
CONSERVANCY DISTRICT



Jacobs



Infinity Corrosion  
GROUP, INC.

## Project Overview: Project Objective



Prepare the filtration and chemical systems at the JVWTP to reliably provide 268 MGD of gross treated water capacity.

## Purpose and Goals

- Introduce major project elements and facility areas
- See the site



P:\summit\ppt\5

5

## Project Areas



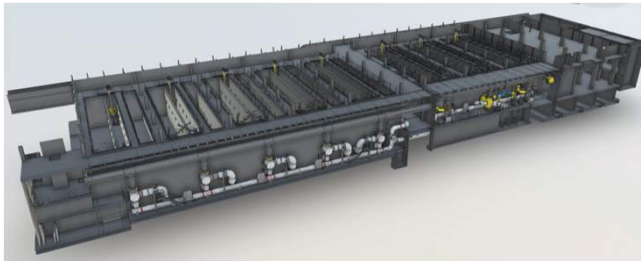
Jacobs



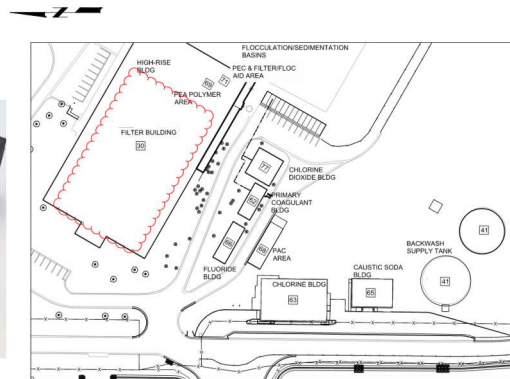
## Filter Upgrades

- Filter Inlet Channels: Demolish existing filter inlet weirs.
- Filter Boxes: Demolish and install new filter media, troughs, underdrains, and nozzles.

Areas: 30



Renderings pp07

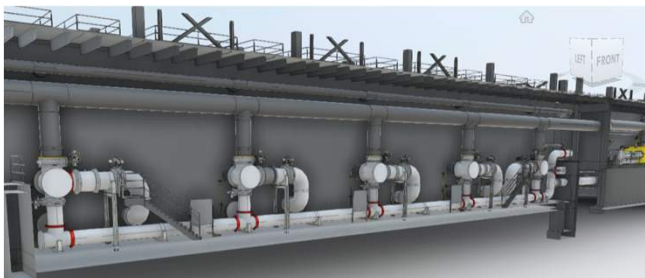


7

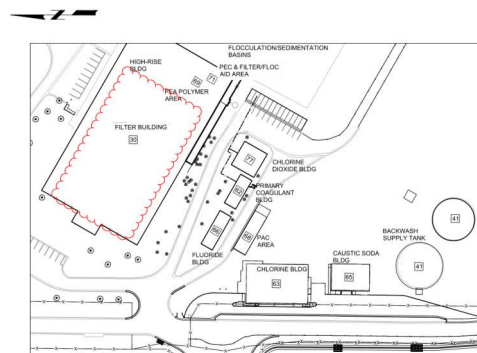
## Filter Piping Upgrades

- Filter Gallery Piping: Demolish and install new magnetic flow meters, flow control valves, and effluent piping. Demolish and install new filter-to-waste piping, valves, and air gap structure. Replace existing filter inlet and waste wash-water valves.

Areas: 30



Renderings pp08

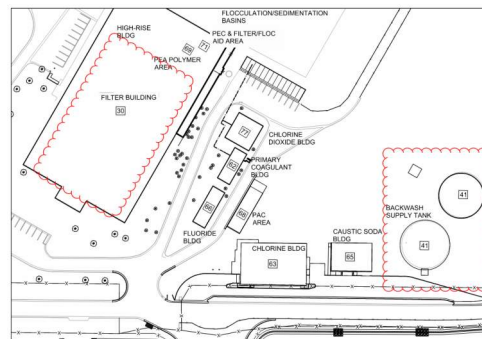
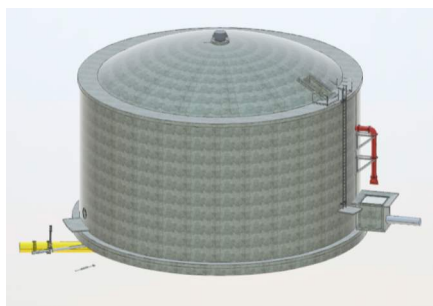


8

## Filter Backwash Upgrades

- Backwash Improvements: Construct new 1-million gallon (MG) pre-stressed concrete backwash tank. Construct new backwash tank vault, valves, and associated piping. Replace flowmeter, existing flow control valve, and add new isolation valves. Replace the air scour blower motor.

Areas: 30, 41

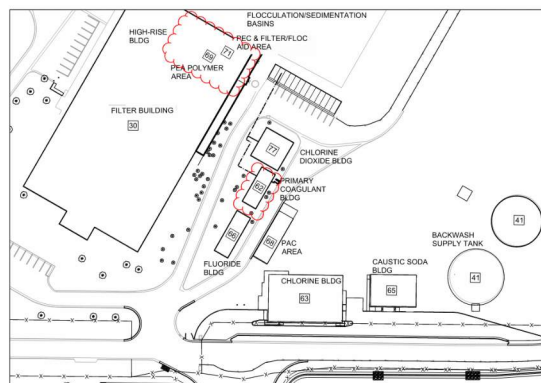
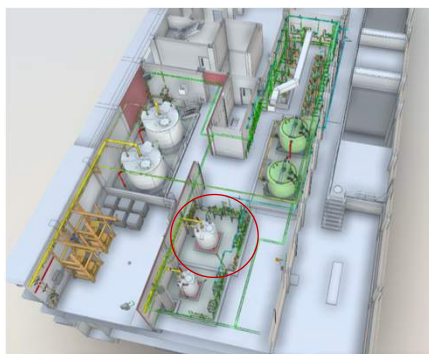


9

## Chemical Feed Upgrades (PC)

- Primary coagulant: Existing bulk tanks will be modified, new transfer pumps installed, and a new Day Tank and metering equipment install.

Areas: 62, 71

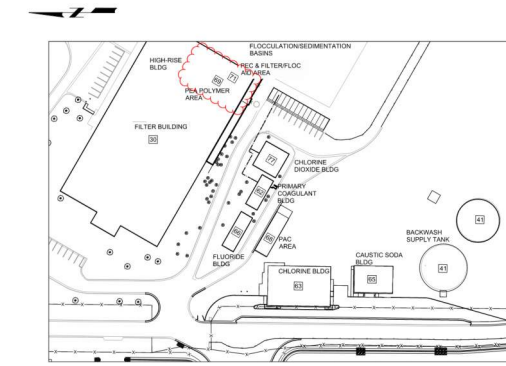
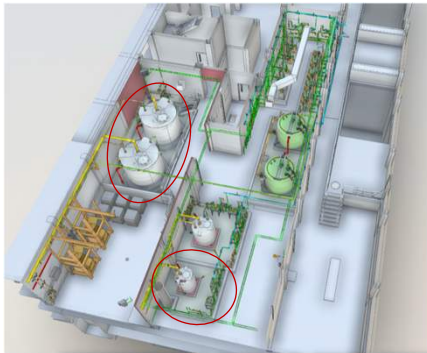


10

## Chemical Feed Upgrades (PEC)

- Cationic polymer (PEC): New bulk storage, day tank, and metering will be installed in the new polymer area. An existing bulk storage in the Primary Coagulant Building currently utilized for PEC will be repurposed for Primary Coagulant.

Areas: 69, 71

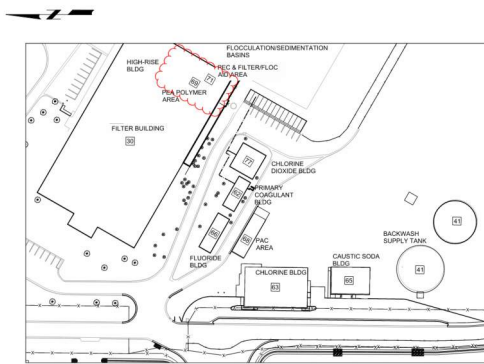
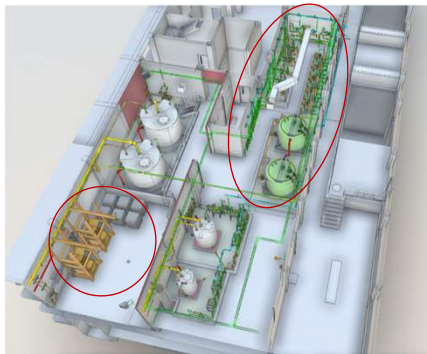


11

## Chemical Feed Upgrades (PEA)

- Anionic polymer (PEA): New PEA batching, storage, and metering systems will be installed in the existing Filter Building. New dosing locations will be installed in the Flocculation Basins. Existing PEA system, on the third floor of the Administration Building, will be connected to this new system as a standby system.

Areas: 69

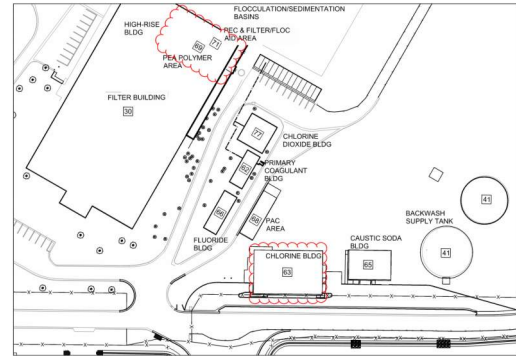
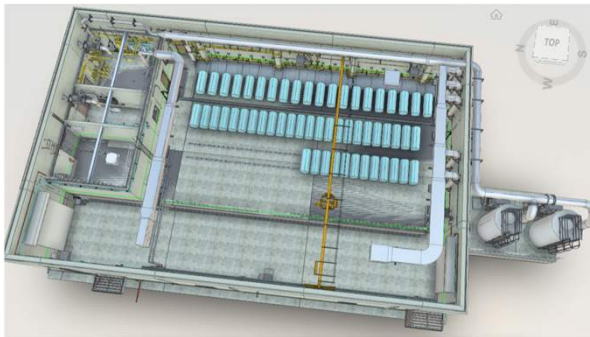


12

## Chemical Feed Upgrades (Chlorine)

- Chlorine gas: A new Chlorine Building will be constructed, with new storage, metering, and piping connected to existing application points. Existing storage and metering will be demolished.

Areas: 63 for new facility, 69 for old facility demo

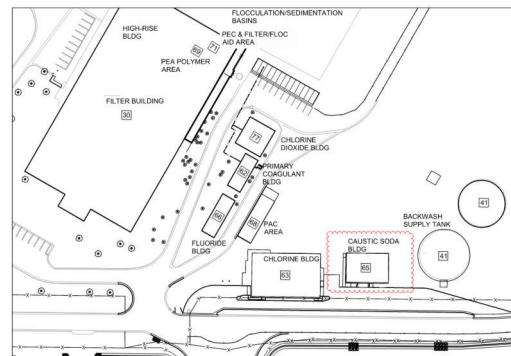
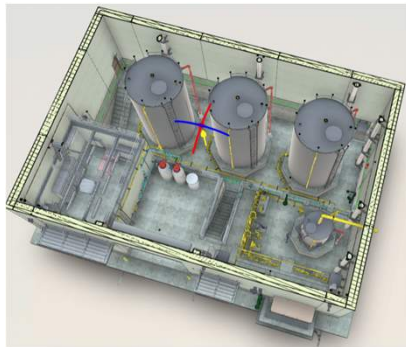


13

## Chemical Feed Upgrades (Caustic)

- Caustic Soda: A new Caustic Building will be constructed, with new storage tanks, metering pumps, softening, and piping to new application point.

Area: 65

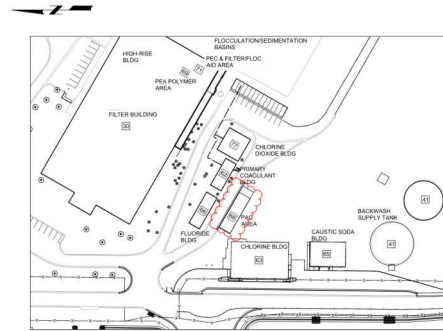
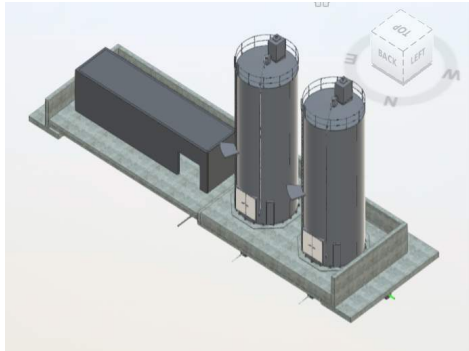


14

## Chemical Feed Upgrades (PAC)

- Powdered activated carbon: New storage silos and feed equipment will be installed outside to create a new PAC Area, connecting to existing piping. Existing PAC equipment will be demolished.

Areas: 68

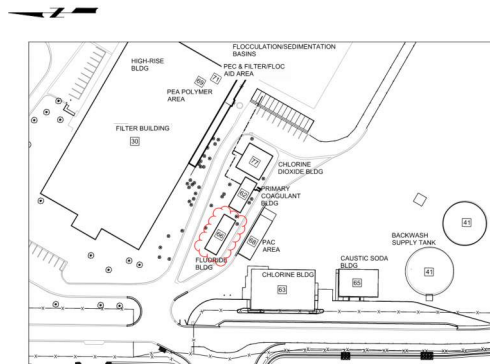


15

## Chemical Feed Upgrades (Fluoride)

- Fluoride: Existing chemical piping and utility water piping in the yard to be replaced with new piping. Small piping modifications inside existing building to accommodate new connections.

Areas: 66

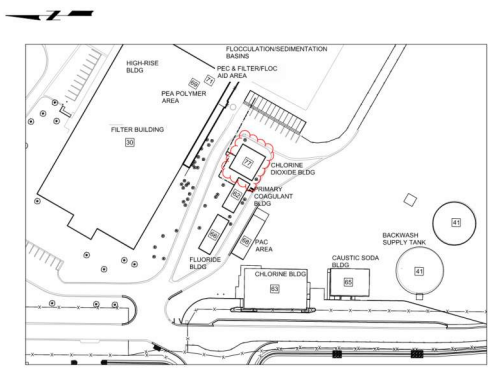


16

## Chemical Feed Upgrades (Chlorine Dioxide)

- Chlorine Dioxide: Existing chlorine dioxide generators will be modified by manufacturer to increase their capacity. Existing feed tubing for this system will be replaced.

Areas: 77



17

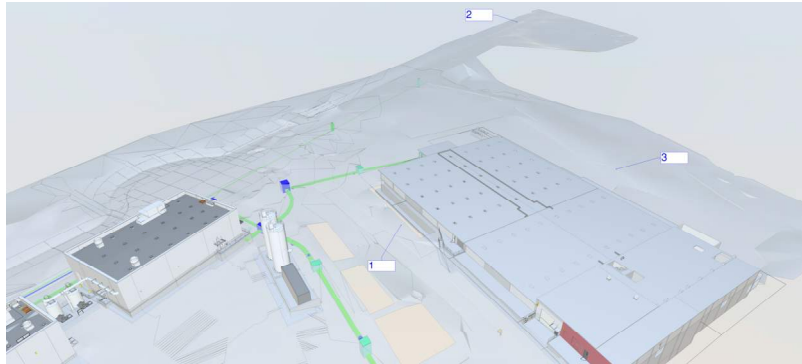
## Electrical Improvements

- Installation of new emergency power generator. (Area 55)
- Contractor shall employ Steve Anderson/APCO for PLC and SCADA programming (Per Specification 01110/17050)
- JVWCD is building the RTUs.(Per Specification 17050)

18

## Electrical Improvements

1. Re-purpose the 480V power feed to the Culinary Pump Station for the new Chlorine and Caustic Soda Buildings.
2. Revise the medium voltage circuit along 3200W to re-power the Culinary Pump Station from Sectionalizer 1.
3. Re-work the Alternate Plant Feed on the north side of the Filter Building to re-power the upsized blower motors.

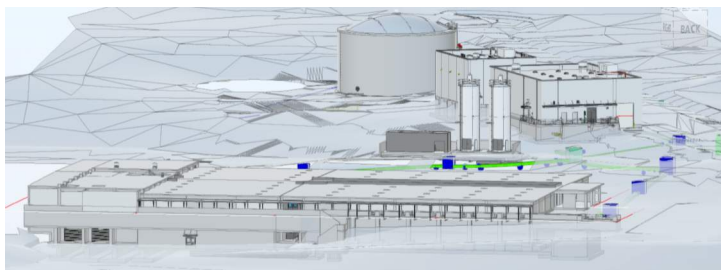


R:\sams\ppt\19

19

## Misc. Civil and Structural Improvements

- Civil yard and grading improvements.
- Utility modifications to support the overall work.
- Repair and reconstruction of existing improvements affected by the Work, and incidentals for complete and usable facility.
- Installation of a canopy over the entrance walkway.



R:\sams\ppt\20

20

# Schedule



JORDAN VALLEY WATER  
CONSERVANCY DISTRICT



Jacobs



Infinity Corrosion  
GROUP, INC.

## Schedule

- Bid Preparation Period: Now
- Non-Mandatory Pre-Bid Site Visit: April 24 @ 2pm
- Bids due: May 15, 2025 @ 2pm
- Award: Within 60 days of Bid (July 14)
- Notice to Proceed: Within 60 days of Award (September 12)
- Completion of Work: By April 30, 2029

## Shutdown Limitations

- Plant shutdowns for construction activities are limited according to 01140

Type of Shutdown	Allowed <sup>(1)</sup>	Additional Requirements	Types of Activities that may be Performed
Complete Plant	Nov 1 - Feb 28 Only: One 120-day shutdown each winter. Oct - 1 - Oct 31 Only: One 2-day (48 hours) shutdown. Mar 1 - Mar 31 Only: One 2-day (48 hours) shutdown.	None.	<ul style="list-style-type: none"> <li>- Chemical feed tie-ins for new chlorine, caustic, and PAC.</li> <li>- Chemical feed tie-ins for primary coagulant, PEC.</li> <li>- Chlorine dioxide tubing replacement to raw water meter vault.</li> <li>- Cutting new filter effluent piping into Filters 1-6 and into FE channels for Filters 7-16.</li> <li>- FTW tie-in MH connection.</li> <li>- BW yard piping modifications.</li> <li>- New BW supply north and south control valves, BWS valve, flowmeter.</li> </ul>
Partial Plant	Oct 15 - Apr 15 Only: Up to 3 months in duration.	One week is needed to switch to half plant operations or change which half the plant is in operation. No shutdowns allowed May 15 - Sep 15.	<ul style="list-style-type: none"> <li>- Work on either north or south filters.</li> <li>- PEA filter feed points.</li> <li>- Replace chlorine dioxide tubing to filter inlet channel.</li> <li>- Demo filter inlet weirs.</li> <li>- Replace filter inlet and waste washwater valves.</li> <li>- Replace filter effluent piping upstream of effluent and FTW valves.</li> <li>- Replace individual filter BW valves (after new BW supply N and S control valves are installed).</li> </ul>
Unit Process	Up to 1 month in duration.	Shutdowns must be separated by 1 week. No shutdowns allowed May 15 - Sep 15.	<ul style="list-style-type: none"> <li>- Minor modifications/adjustments within a filter box.</li> <li>- Installing PEA piping in a flocculation basin.</li> </ul>
Support Facilities	Up to 4 hours in duration, unless mutually agreed that a longer duration is tolerable.	Shutdowns must be separated by 1 week. No shutdowns allowed May 15 - Sep 15.	<ul style="list-style-type: none"> <li>- Backwash system modifications.</li> <li>- Cleaning/emptying of existing PEC storage tank to convert to use with primary coagulant.</li> </ul>
<b>Notes:</b> 1. No shutdowns allowed during the WTP's maximum production period, May 15 through September 15.			

Resumes p. 23

23

## Additional Caveats



Jacobs

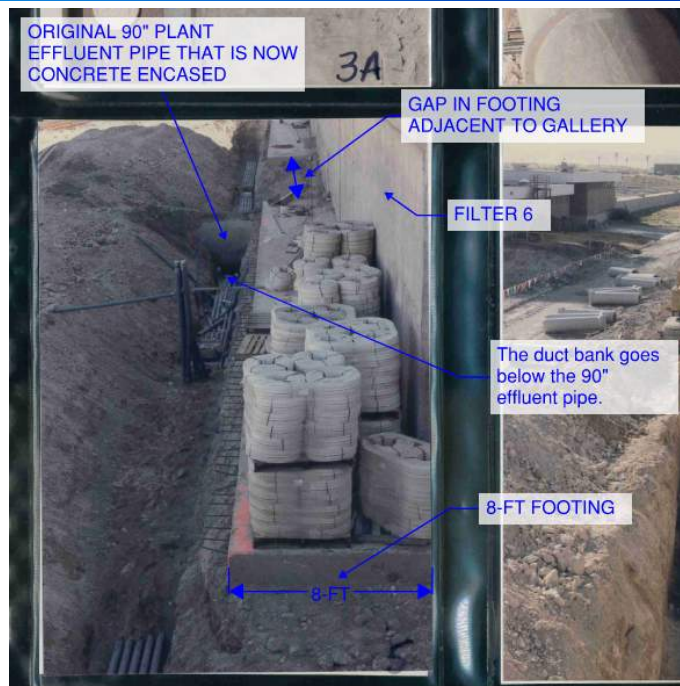


- No or equal approvals will be done before the bid
- Any answers to questions given today are not official
- All questions must be submitted formally and will be addressed via addenda.

File name: ppt/23

## Congested Area Underground Work

*Photo at right shows conditions during (before) construction of Filters 7-16.*



File name: ppt/25

# Wrap Up



JORDAN VALLEY WATER  
CONSERVANCY DISTRICT



Jacobs



Infinity Corrosion  
GROUP, INC.

## Wrap Up

- Questions